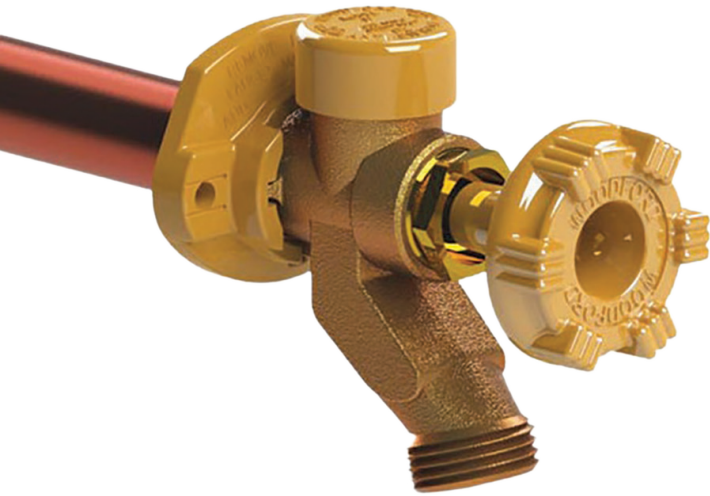


# Hydrant Repair

*Popular Wall Hydrants and Repair Parts*





# FREEZELESS ANTI-SIPHON WALL HYDRANT MODEL 17

<b>#61856</b> 4"	<b>#61857</b> 6"	<b>#81134</b> 8"	<b>#50630</b> 10"
<b>#65384</b> 12"	<b>#50632</b> 14"	<b>#46751</b> 16"	<b>#57591</b> 18"

The Freezeless Model 17 is designed for year-round residential irrigation purposes regardless of outside temperature. This hydrant will not rupture from freezing when the valve is shut off and the hose is removed. Contains an integral backflow protection device which protects up to 125 PSI of back pressure and does not require an add-on vacuum breaker. This ASSE 1019 device is intended for irrigation use and outdoor watering and shall not be subjected to more than 12 hours of continuous water pressure.

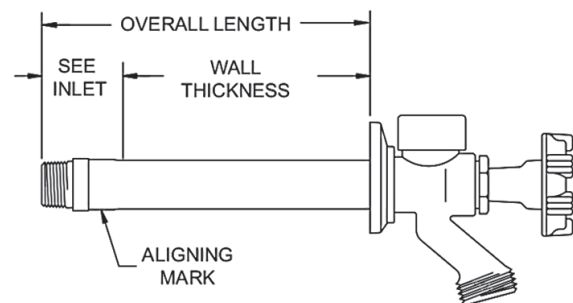
## Compliances & Certifications:

- ASSE 1019 - Type C Listed
- CSA, cUPC Approved

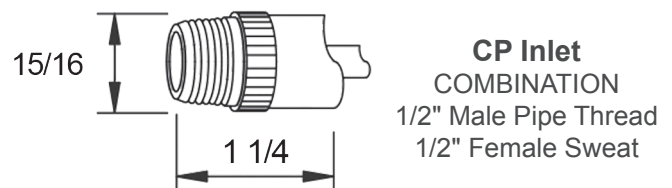
## Features:

- 3/4" male hose thread nozzle
- Stainless steel seat - eliminates wire draw
- EPDM packing to prevent leaking
- Full circle operating threads on valve body and retainer
- No-lead solder
- Standard "O" size seat washer
- Powder-coated, die cast aluminum handle
- Adjustable polycarbonate wall flange
- Max Pressure - 125 PSI
- Max Temperature - 120°F

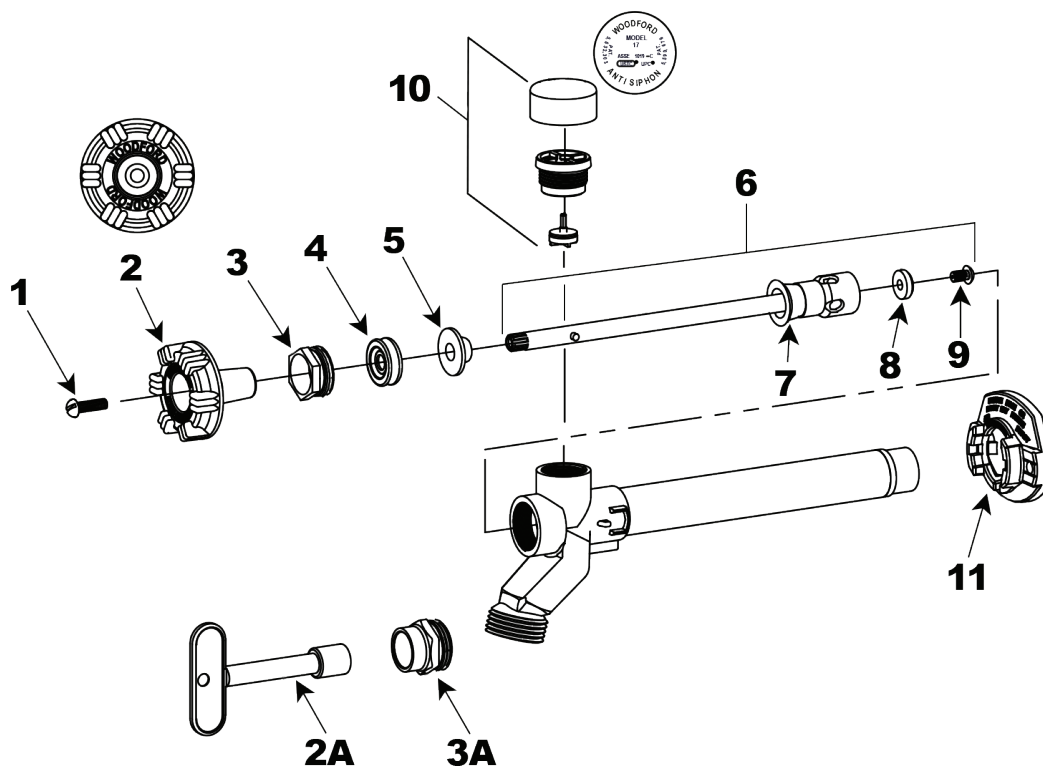
## Rough-In Dimensions



## Inlet Description



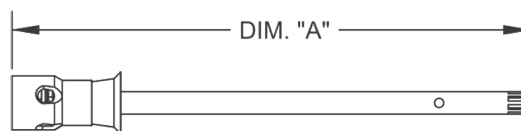
## Parts Breakdown



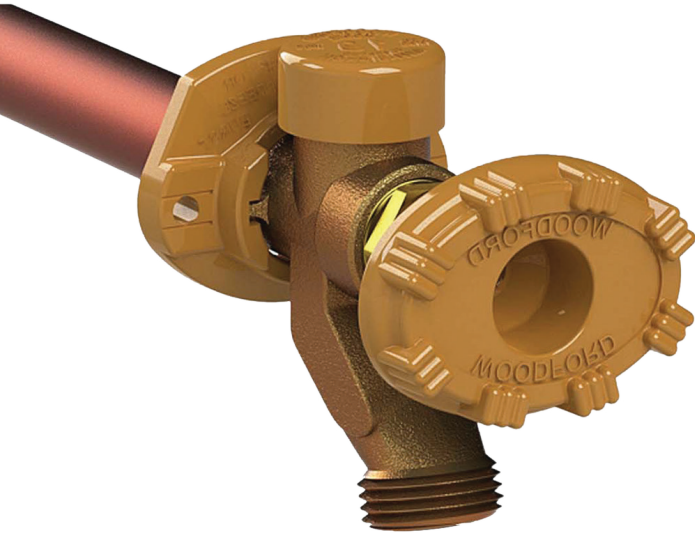
### Parts List:

#	Part Number	Model Number	Description
1	#PUI 39207	30002	Handle Screw
2	#PUI 39213	30096	Wheel Handle - Round Powder Coated Die Cast Aluminum
2A	#89077	50012	Tee Key (Optional)
3	Call to Order	30059	Packing Nut
3A	Call to Order	30512	Packing Nut w/ deep stem guard
4	#PUI 39208	30560	EPDM Packing
5	Call to Order	30421	Packing Support Washer
6	See Chart	357XX	Valve Stem Assembly (See chart to the right)
7	Call to Order	30459	Check Valve
8	#PUI 39210	30008	Valve Seat Rubber
9	#PUI 39211	30009	Retainer Screw
10	#80747	RK-17VB	Vacuum Breaker Float Kit
11	Call to Order	30098	Adjustable Flange
-	#PUI 39272	RK-17MH	Repair Kit (Includes items 1-5 & 7-10)

### Valve Stem Assembly



Wall Thickness	Overall Length	Model Number	Part Number
4	5-7/8"	35720	Call to Order
6	7-7/8"	35721	#66013
8	9-7/8"	35722	#602318
10	11-7/8"	35723	#68535
12	13-7/8"	35724	#68598
14	15-7/8"	35725	Call to Order
16	17-7/8"	35736	Call to Order
18	19-7/8"	35726	Call to Order
20	21-7/8"	35737	Call to Order
22	23-7/8"	35738	Call to Order
24	25-7/8"	35727	Call to Order



# FREEZELESS ANTI-SIPHON WALL HYDRANT MODEL 19

**#88968**  
**8"**

The Freezeless Model 19 is designed for year-round residential irrigation purposes regardless of outside temperature. Contains an integral backflow protection device which protects up to 125 PSI of back pressure and therefore does not require an add-on vacuum breaker. This ASSE 1019 device is intended for irrigation use and outdoor watering and shall not be subjected to more than 12 hours of continuous water pressure.

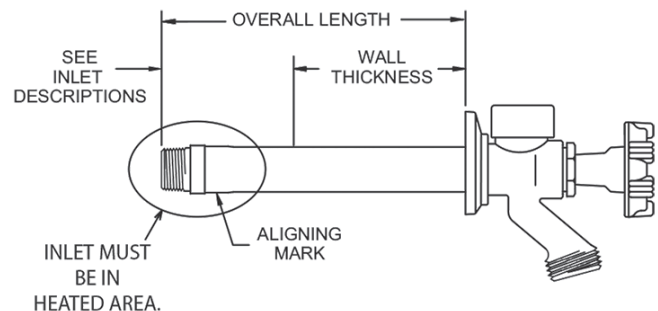
## Compliances & Certifications:

- ASSE 1019 - Type C Listed
- CSA, cUPC Approved

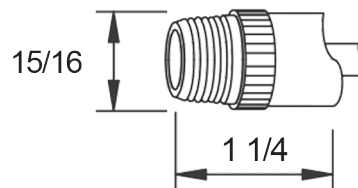
## Features:

- Patented resetting pressure relief valve prevents the faucet tube from bursting in freezing conditions even if a hose is unintentionally left on
- 3/4" male hose thread nozzle
- Stainless steel seat - eliminates wire draw
- EPDM packing to prevent leaking
- Full circle operating threads on valve body and retainer
- No-lead solder
- Standard "O" size seat washer
- Oval, powder coated, die cast aluminum handle
- Adjustable polycarbonate wall flange
- Max Pressure - 125 PSI | Max Temperature - 120°F

## Rough-In Dimensions

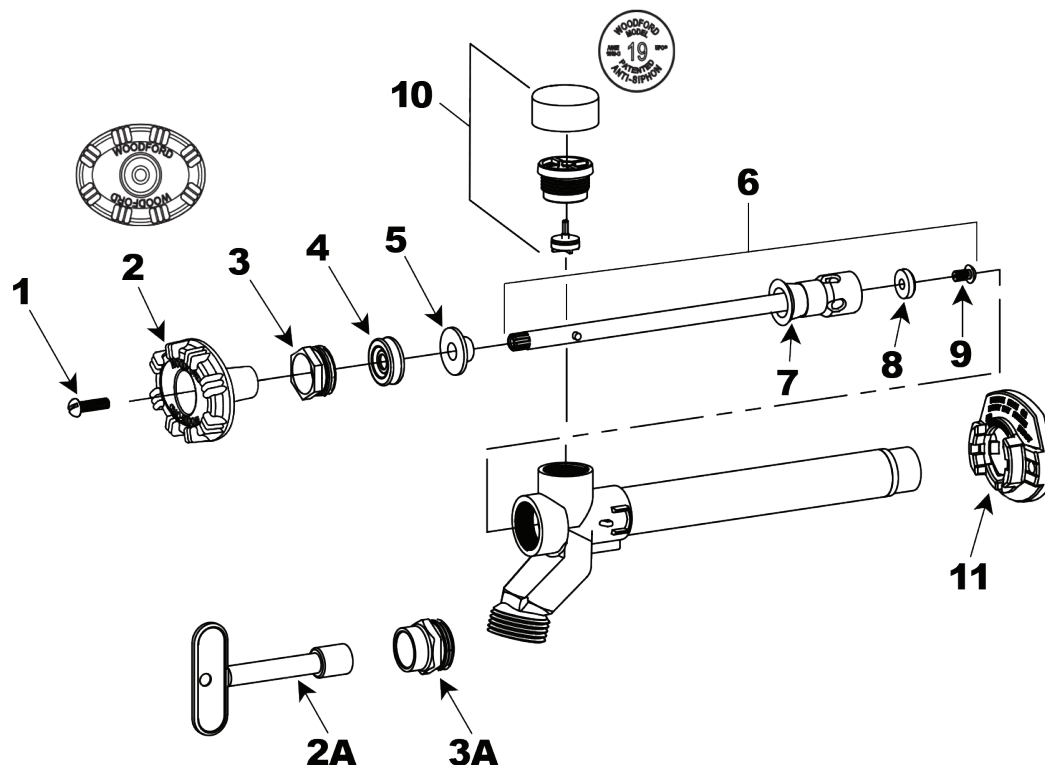


## Inlet Description



**CP Inlet  
COMBINATION**  
1/2" Male Pipe Thread  
1/2" Female Sweat

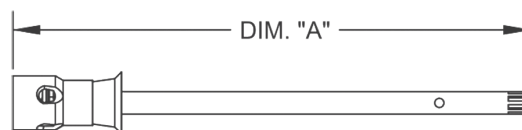
## Parts Breakdown



## Parts List:

#	Part Number	Model Number	Description
1	#PUI 39207	30002	Handle Screw
2	#62190	30559	Wheel Handle - Oval Powder Coated Die Cast Aluminum
2A	#89077	50012	Tee Key (Optional)
3	Call to Order	30059	Packing Nut
3A	Call to Order	30512	Packing Nut w/ deep stem guard
4	#PUI 39208	30560	EPDM Packing
5	Call to Order	30421	Packing Support Washer
6	See Chart	RK-PRV	Valve Stem Assembly (See chart to the right)
7	Call to Order	30459	Check Valve
8	#PUI 39210	30008	Valve Seat Rubber
9	Call to Order	30804	Retainer Screw
10	Call to Order	RK-19VB	Vacuum Breaker Float Kit - Model 19
11	Call to Order	30098	Adjustable Flange
-	#68693	RK-19	Repair Kit (Includes items 1-5 & 7-10)

## Valve Stem Assembly



Wall Thickness	Overall Length	RK-PRV Number*	Rod Only Part #**	EC Part Number
4	5-7/8"	RK-PRV-4	35092	Call to Order
6	7-7/8"	RK-PRV-6	35093	Call to Order
8	9-7/8"	RK-PRV-8	35094	Call to Order
10	11-7/8"	RK-PRV-10	35095	Call to Order
12	13-7/8"	RK-PRV-12	35096	#68692
14	15-7/8"	RK-PRV-14	35097	Call to Order
16	17-7/8"	RK-PRV-16	35098	Call to Order
18	19-7/8"	RK-PRV-18	35099	Call to Order
20	21-7/8"	RK-PRV-20	35100	Call to Order
22	23-7/8"	RK-PRV-22	35101	Call to Order
24	25-7/8"	RK-PRV-24	35102	Call to Order

\*RK-PRV Includes Items 1 - 4, 6 - 9

\*\*Rod Only Includes Items 6 - 9



# FREEZELESS ANTI-SIPHON AUTOMATIC DRAINING WALL HYDRANT MODEL 25

**#601547**  
8"

**#601548**  
12"

The Woodford Model 25 drains as the handle is shut off (even if hose is attached). Designed for outside residential water service applications and intended for irrigation purposes.

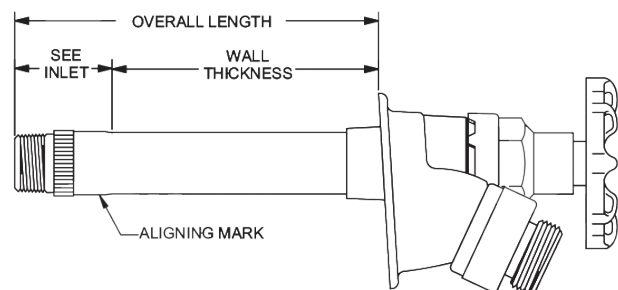
## Compliances & Certifications:

- Model 25 – Approved under ASSE Standard 1019-B and listed by IAPMO®. Meets Government Specification WW-541b Type 205.
- Vacuum Breaker - Anti-Siphon NIDEL® model 34HA with 3/4" male hose thread. Approved under ASSE Standard 1011. Canadian Standards Association and listed by IAPMO®.

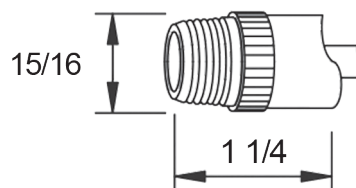
## Features:

- Exterior finish: Brass
- Valve: Molded nitrile suitable for hot water
- Nozzle: 3/4" male hose thread
- No lead solder: All solder joints
- Plunger: Hemispherical cushion type
- Stem screw: DELRIN®
- Head nut: Brass
- Handle: Metal (Optional Tee Key)
- Inlet: As shown to the right
- Max Pressure: 125 PSI
- Max Temperature: 120°F

## Rough-In Dimensions

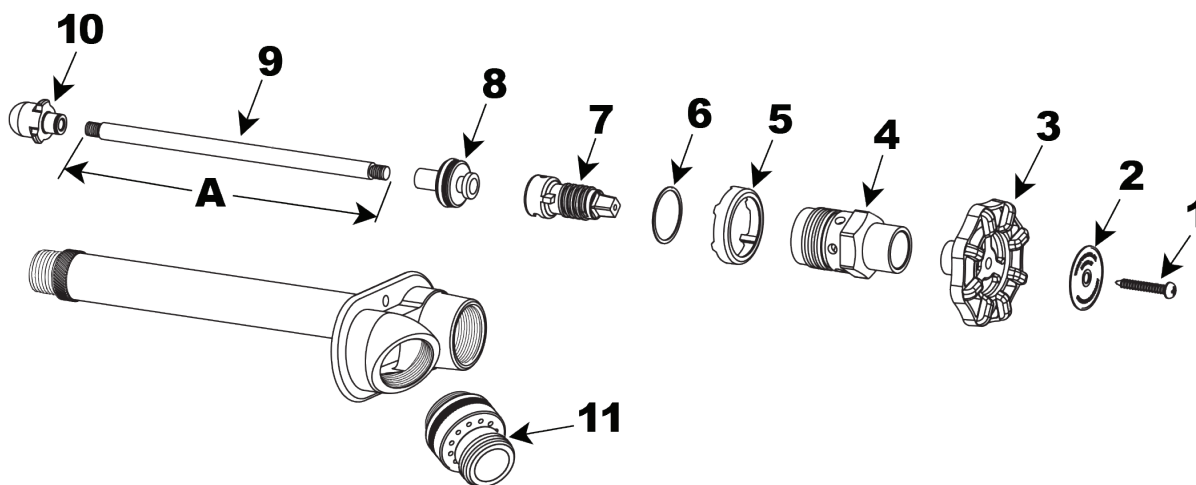


## Inlet Description



**CP Inlet**  
COMBINATION  
1/2" Male Pipe Thread  
1/2" Female Sweat

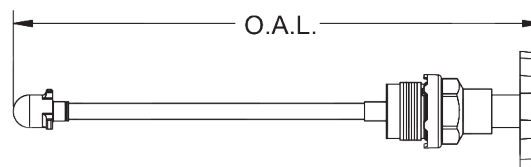
## Parts Breakdown



### Parts List:

#	Part Number	Model Number	Description
1	#SP14380	30324	Handle Screw
2	Call to Order	30438	I.D. Ring - Model 25
3	Call to Order	30239	Wheel Handle - Metal
4	Call to Order	30241	Brass Head Nut
5	#SP14381	30236	Drain Guard
6	Call to Order	30245	Head Nut Gasket
7	#SP1516	30238	Stem Screw
8	#SP002	35280	Drain Valve Assembly
9	Call to Order	303XX	Operating Rod (See Chart Below)
10	#SP001	30230	Plunger Assembly
11	#81821	34HA-BR	34HA Brass Vacuum Breaker
-	#65582	RK-25	Repair Kit (Includes items 1, 3-8, & 10)

### Operating Rod Assembly



Operating Rod Assembly Includes Items 1 - 10.  
Call to Order

Wall Thickness	Overall Length	Model Number
CC	5"	35501
4	8"	35504
6	10"	35506
8	12"	35508
10	14"	35510
12	16"	35512
14	18"	35514
16	20"	35516
18	22"	35518
20	24"	35520
22	26"	35522
24	28"	35524

### Operating Rod Dim "A"

Wall Thickness	Overall Length	Model Number	Wall Thickness	Overall Length	Model Number
4	5"	35501	16	18"	35514
6	8"	35504	18	20"	35516
8	10"	35506	20	22"	35518
10	12"	35508	22	24"	35520
12	14"	35510	24	26"	35522
14	16"	35512			

Operating Rod - Call to Order



# 1/4 TURN FROSTFREE ANTI-SIPHON SILCOCK T-550NL



**#61854**  
1/2" x 8"

**#61855**  
1/2" x 10"

**#49968**  
1/2" x 12"

**#67341**  
1/2" x 14"

The T-550NL is designed for year-round residential irrigation purposes regardless of outside temperature. This hydrant will not rupture from freezing when the valve is shut off and the hose is removed. Contains a vacuum breaker and can protect up to 120 PSI of back pressure. This device must not be subjected to more than 12 hours of continuous water pressure.

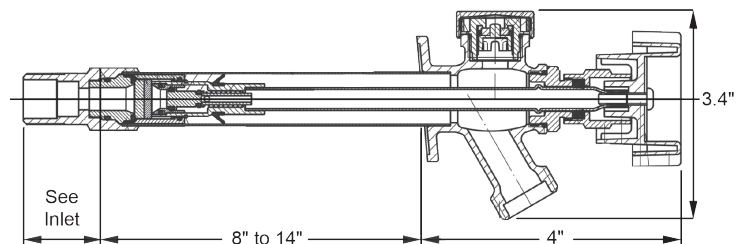
## Compliances & Certifications:

- NSF/ANSI 61
- ASSE 1019-A
- ANSI/ASME B1.20.1
- ANSI/ASME B16.18
- ASTM F1807
- ANSI/ASME B16.51

## Features:

- Easy to grip 1/4-turn Softouch™ TPR coated metal handles
- Patented dual disc cartridge for durable & reliable shut-off
- Oversized, 5 degree angled mounting flange for easy installation. Includes EPDM rubber gasket.
- Integrated anti-siphon vacuum breaker with chrome plated brass cap

## Rough-In Dimensions

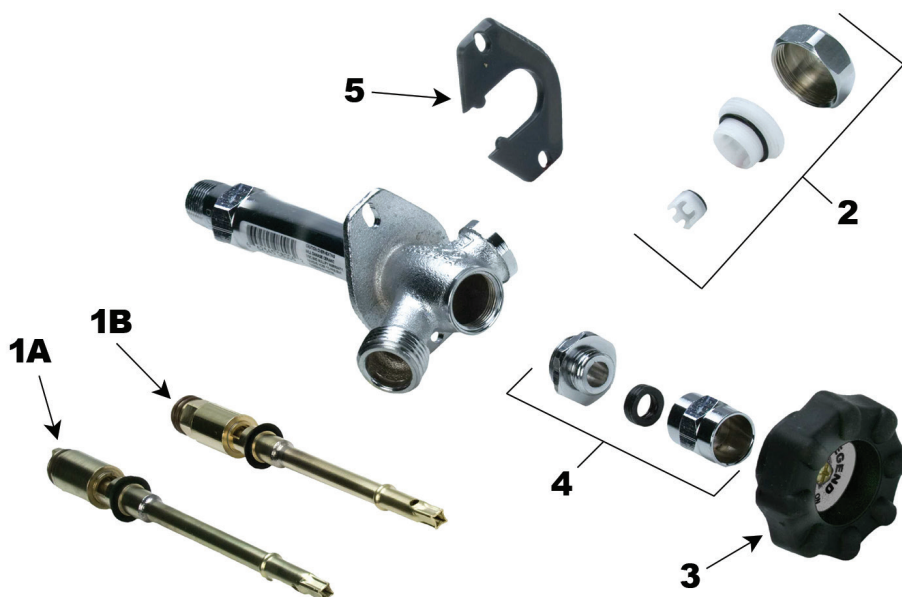


## Inlet Description



**MNPT/Sweat**  
1/2" MNPT  
1/2" Sweat

## Parts Breakdown



### Parts List:

#	Part Number	Model Number	Description
1A	#PUI 57725	108-906A	<b>Improved Flow T-550A Cartridges</b> 6" Replacement Cartridge
	#PUI 57726	108-908A	8" Replacement Cartridge
	#PUI 57727	108-910A	10" Replacement Cartridge
1B	#PUI 58848	108-906AR	<b>Original T-550 Retrofit Cartridges</b> 6" Replacement Cartridge
	#PUI 58849	108-908AR	8" Replacement Cartridge
	#PUI 58850	108-910AR	10" Replacement Cartridge
	#PUI 56453	108-912AR	12" Replacement Cartridge
2	#PUI 55638	108-903	Vacuum Breaker Repair Kit
3	Call to Order	108-162	Handle, Screw, and Disc
4	Call to Order	108-904	Replacement Bonnet Assembly
5	Call to Order	108-902	Sliding Wedge

Note 1: The Original T-550 incorporates a detachable cartridge attached by a stainless steel Phillips-head screw at the back of the stem (picture with arrow to the right), permitting cartridge removal from the stem. The replacement cartridge eliminates this feature as the stem and cartridge are now one piece.

Note 2: Retrofit cartridges for the Original T-550 sillcocks were manufactured before 2008. These cartridges are **NOT** interchangeable with the Improved Flow T-550A Cartridges.

### Cartridge Assemblies



#### Improved Flow T-550A Cartridges

Sillcock Length	Cartridge Length w/ handle w/o handle		Model Number	Part Number
4"	8-1/2"	7-3/4"	108-904A	Call to Order
6"	10-1/2"	9-3/4"	108-906A	#PUI 57725
8"	12-1/2"	11-3/4"	108-908A	#PUI 57726
10"	14-1/2"	13-3/4"	108-910A	#PUI 57727
12"	16-1/2"	15-3/4"	108-912A	Call to Order
14"	18-1/2"	17-3/4"	108-914A	Call to Order



#### Original T-550 Retrofit Cartridges

Sillcock Length	Cartridge Length w/ handle w/o handle		Model Number	Part Number
4"	8-1/2"	7-5/8"	108-904AR	Call to Order
6"	10-1/2"	9-5/8"	108-906AR	#PUI 58848
8"	12-1/2"	11-5/8"	108-908AR	#PUI 58849
10"	14-1/2"	13-5/8"	108-910AR	#PUI 58850
12"	16-1/2"	15-5/8"	108-912AR	#PUI 56453
14"	18-1/2"	17-5/8"	108-914AR	Call to Order



# FREEZELESS WALL HYDRANT P-164 SERIES



**#PUI PBP164D06**  
1/2" MPT x 1/2" SWT  
6" Insertion

**#PUI 66888**  
1/2" MPT x 1/2" SWT  
8" Insertion

**#PUI PBP164D10**  
1/2" MPT x 1/2" SWT  
10" Insertion

**#PUI PBP164D12**  
1/2" MPT x 1/2" SWT  
12" Insertion

The Prier P-164 provides a year round source of water in areas that are subject to freezing temperatures. The hydrant valve is connected to the supply piping in the heated portion of the structure, eliminating the possibility of freezing. Has the added benefit of an easy quarter-turn operation that feature a proven compression type seal. It also features a soft grip operating handle for easy operation in wet conditions and cold weather.

## Features:

- Anti-siphon aluminum vacuum breaker with EPDM backflow preventer and backflow check valve
- Quarter-turn soft-grip coated cast aluminum handle
- Wide and enclosed screw holes easily secure mounting screws
- Integral cast flange with built-in drainage pitch
- Solid brass body, valve stem cap, seat and stem ends
- Satin nickel plated body maintains attractive finish
- Stainless steel screws
- Lock shield cap
- AFG teflon with graphite packing for easy maintenance
- Standard "OO" size seat washer
- Air-tested for leak-free quality
- Spout aligning mark with manufacturer's date code

## Rough-In Dimensions

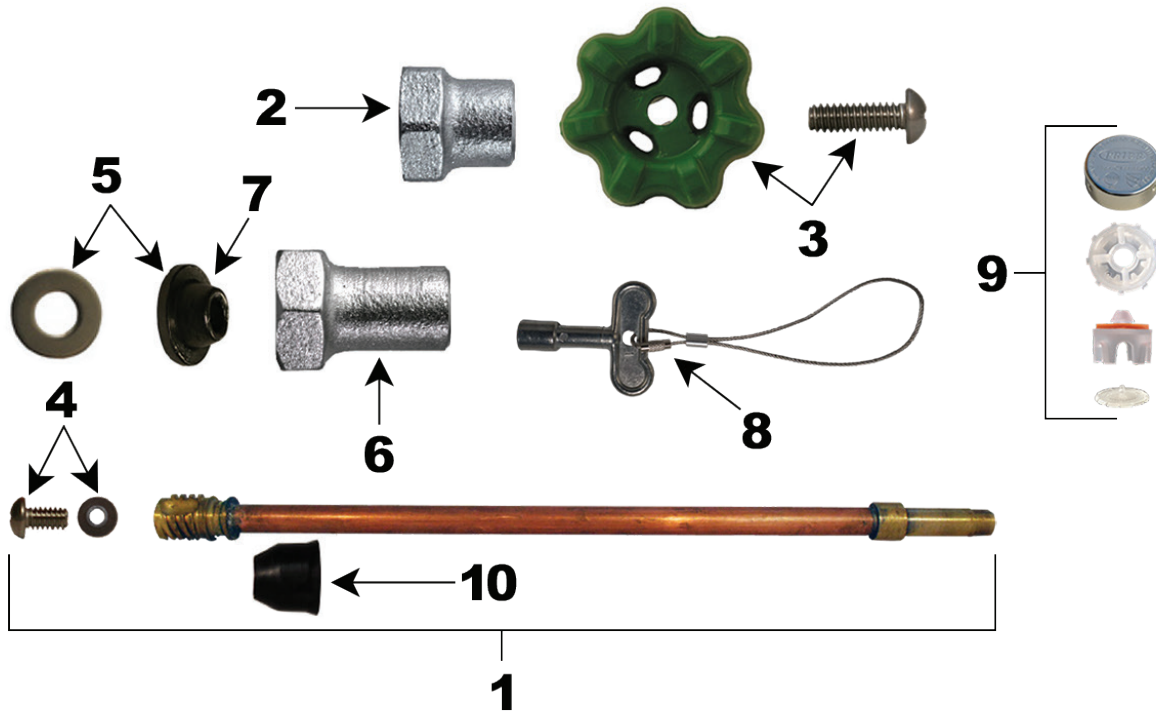


## Inlet Description



**MPT/Sweat**  
1/2" MPT  
1/2" Sweat

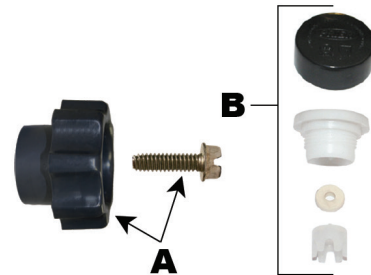
## Parts Breakdown



### Parts List:

#	Part Number	Model Number	Description
1	Call to Order		Stem Assembly - Contains 1, 4, 10
2	#52653	300-1008	Valve Stem Cap
3	Call to Order	P-164KT-805	Oval Handle and Screw Kit
4	Call to Order	C-134KT-802	Seat Washer Replacement Kit (00 Beveled)
5	#52654	C-134KT-803	Stem Packing Replacement Kit
6	#69588	310-1015	Valve Stem Cap for Loose Key
7	#52655	390-1001	Stem Packing Only
8	#53379	C-108KT-808	Oval Style Key on Lanyard
9	#52581	C-144KT-806	Universal Vacuum Breaker Replacement Kit
10	Call to Order	336-0002	Backflow Check Valve
-	#52580	C-134KT-804	Handle to Loose Key Conversion Kit - Contains 5, 6, 8

### Old Style 500 Series Kits (Manufactured 1970 - 2006)



#	Part Number	Model Number	Description
A	#PUI 33432	630-7965	Handle & Screw Kit (Grey Plastic Handle)
B	#PUI 33428	630-7500	Vacuum Breaker Replacement Kit (Plastic Parts with Rubber Washer)
-	#PUI 33430	630-7755	Service Kit
-	#46696	630-8500	Complete Service Kit, Handle & Vacuum Breaker Kit (See Pg 12)

# REPAIR PARTS

Full line of Woodford, Prier, and Legend is available, as well as other top manufacturers including BK and Mueller. Call for more information.

## TAN HANDLE FOR WOODFORD WALL HYDRANT MODELS 24 & 26

#PUI 52643 (30233)



Top

Bottom

## WOODFORD MODEL 14 REPAIR KIT

#PUI 39271 (RK-14MH)



### Kit Includes

- Handle Screw
- Metal Wheel Handle
- Packing Nut
- EPDM Packing
- Packing Support Washer
- Valve Seat Rubber
- Retainer Screw

## WOODFORD MODEL 65 REPAIR KIT

#PUI 39274 (RK-65)



### Kit Includes

- Tee Key
- Chrome Head Nut
- Stem Washer
- Stem Screw
- "C" Washer
- Yoke Nut
- Plunger

## MANSFIELD/PRIER WALL HYDRANT COMPLETE SERVICE KIT



#46696  
(630-8500)

### Kit Includes

- #PUI 33432 Handle Screw Kit
  - Grey Plastic Handle & Stainless Steel Screw
- #PUI 33428 Vacuum Breaker Replacement Kit
  - Plastic Parts with Rubber Washer
- #PUI 33430 Service Kit for 300/400/500 Series
  - Brass Bibb Screw
  - Rubber Bibb Washer
  - Brass Cage Washer
  - Rubber BFP Washer
  - Rubber Stem End O-Ring
  - Stainless Steel Washer
  - Graphite Packing for RH Packing Nut
  - Graphite Packing for LH Packing Nut
  - Plastic RH Thread Packing Nut
  - Plastic LH Thread Packing Nut
  - Rubber O-Ring for RH Packing Nut

## ALL BRASS LARGE BORE HOSE SHUT-OFF WITH SWIVEL CONNECTION



#52869

*A Must Buy With Our  
#28338 Hose Nozzle!*