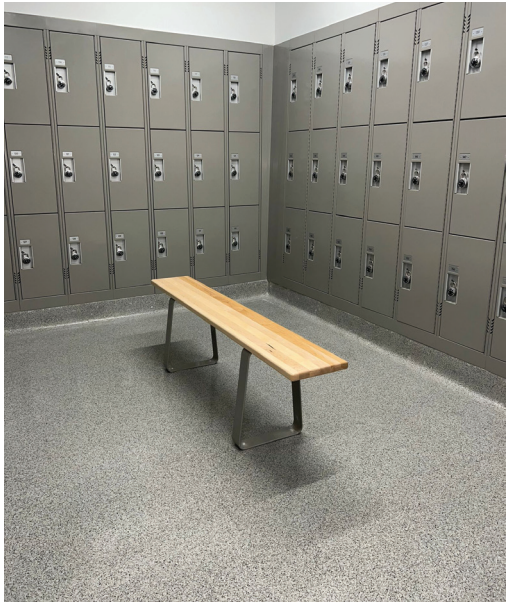


**EQUIPARTS**  
Repair Parts Specialists  
TOLL FREE: 800-442-6622  
PITTSBURGH: 412-781-9100  
[www.equiparts.com](http://www.equiparts.com)  
That Hard to Find Part is Right Here!



**hadrian**<sup>®</sup>  
**WORLD DRYER**  
**Product  
Collection**



**NEW!**

## Phenolic Toilet Partitions



### Style Meets Durability

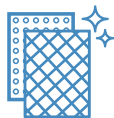
Hadrian's phenolic partitions put sophisticated style in even the most demanding environments. They're an upgrade to the everyday in every way – including design, durability and privacy.



**Privacy**



**Durability**

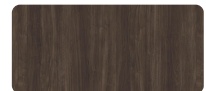


**Stylish Design**



**Versatility**

**Featured in:**



Florence Walnut  
318

*12 colors available*



## Ideal for

High-end, high-usage environments



Schools



Retail



Commercial Buildings



Transportation



Upgraded designer hardware available in brushed stainless steel or matte black



Coat Hook



Hinge



Pedestal Mount



Indicator Latch



Door Pull



Continuous Channel

# Solid Plastic Toilet Partitions



## Built to Last

Solid plastic partitions are made from durable high-density polyethylene, so they offer the utmost in strength and durability. The solid core material comes in a full range of certified Class B colors as well as a selection of NFPA 286 compliant colors (at an additional charge).



**Built to Last**



**Uniform Color Throughout**



**Heavy-duty Hardware**



**Industry-leading Warranty**

**Featured in:**



Blueberry  
212

*14 colors available*



## Ideal for

High-end, high-usage environments



**Schools**



**Stadiums**



**Parks**



**Community Centers**



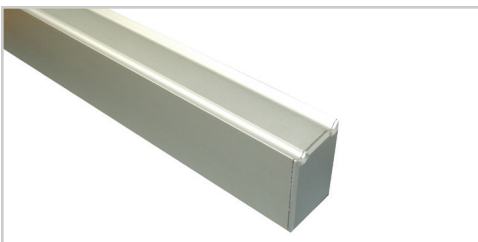
Heavy-duty hardware available in aluminum or brushed stainless steel



Aluminum Barrel Hinge



Stainless Steel Latch



Anti-grip Headrail



Shoes

# Powder Coated Toilet Partitions



## Low Cost, High Performance

Hadrian's powder-coated partitions are the best value in the industry – they offer durability, fire resistance, no-sightline solutions and a high recycled content at an entry level price.



**Industry-best  
fire resistance**



**Privacy**



**High Recycled  
Content**



**Can be repaired in  
case of vandalism**

### Featured in:



Charcoal  
545

*22 colors available*



## Ideal for

Industrial, commercial and environmentally sensitive projects



**Restaurants**



**Hospitality**



**Commercial Buildings**



**Industrial**



Hardware available in chrome or brushed stainless steel



Concealed Latch



Indicator Latch



Concealed Hinge



Anti-grip Headrail



No-sightline Solution



Wrap Hinge

# Stainless Steel Toilet Partitions

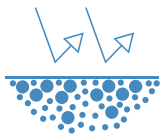


## Build Greener, Last Longer

Stainless steel is a greener choice with no compromise on looks, making it excellent for LEED and other environmentally sensitive projects. It features industry-best fire protection and an upscale look at a cost-effective price point.



**Contains 91% recycled content**



**Promotes hygiene**



**Industry-best fire resistance**



**Corrosion and impact resistant**

### Featured in:



304 #4 Brushed Stainless

*Available in brushed stainless, embossed, or hybrid finish*



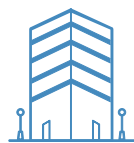


## Ideal for

High-traffic areas and upscale applications



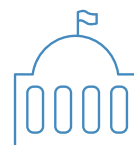
**Transportation**



**Commercial Buildings**



**Healthcare**



**Government**



Upgraded designer hardware available in chrome or brushed stainless steel



Pedestal Mount



Wrap-around Hinges



Indicator Latch



Anti-grip Headrail



No-sightline Solution



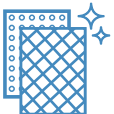
Concealed Latch

# Lockers



## Designed For Every Environment

Find the right storage solution for your next project. Hadrian lockers are ultraquiet, environmentally friendly and nearly maintenance-free. Emperor corridor lockers are the ideal choice for virtually any facility, while Gladiator lockers work well in athletic environments requiring maximum ventilation.



Custom Designs



Environmentally  
Friendly



Outstanding  
Fire Resistance

### Featured in:



Ruby Red  
576

*Variety of  
colors available*



## Ideal for

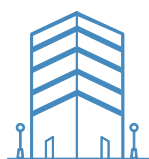
High-end, high-usage environments



Schools



Gyms



Commercial Buildings



Public Facilities



Available styles and accessories



Emperor



Gladiator



Divided Lockers



Boot Racks

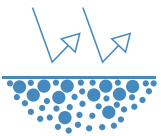


Locker Pedestal Bases



## Cleaner, Greener, Drier

Optimize space and save energy with World Dryer's selection of hand dryers. Our surface-mounted, ADA compliant dryers cost less over time than paper towels and deliver superior hygiene through filtration.



Hygienic



Energy Efficient



ADA Compliant



Reliable

### Featured in:



Stainless Steel,  
Brushed  
Q-973A2

*4 finishes available*

## Ideal for

High-end, high-usage environments



Retail



Health Care



Commercial Buildings



Industrial Buildings



VERDEdri



SMARTdri Plus



VMAX 2



eXtremeAir



Airforce



SLIMdri



## Start Your Next Project With Hadrian and World Dryer

Specify your next project at [hadrian-inc.com](http://hadrian-inc.com) and [worlddryer.com](http://worlddryer.com)

- Specifications
- BIM objects
- CAD details
- Sustainability information

### Project Center

Work with authorized Hadrian sales representatives and distributors who have access to Project Center, the industry's best project management system for toilet partitions and lockers, to ensure speed, accuracy, and professional submittal documents for your projects.



[linkedin.com/company/hadrian-manufacturing-inc./](https://www.linkedin.com/company/hadrian-manufacturing-inc/)



[facebook.com/HadrianInc](https://www.facebook.com/HadrianInc)



[instagram.com/hadrian\\_inc/](https://www.instagram.com/hadrian_inc/)





### Hygienic & Environmental

World Dryer hand dryers save trees, reduce emissions from paper towel production and create a more sanitary experience. In 2022, World Dryer hand dryers saved 166,000 trees. VERDEdri touchless dryers get hands dry in as little as 12 seconds and use only 3.16 watt hours of electricity.

Hadrian restroom partitions were the first in the industry to embrace powder coating, which produces virtually no waste and uses less energy. Hadrian stainless steel partitions include 91% recycled content; while powder coated partitions and lockers include 50% recycled content.

### Outstanding Reliability, Exceptional Service

The Hadrian Way means an outstanding record of reliability and fast, error-free delivery – right on time, every time.

### World Dryer Means Innovation

We innovate constantly for a better user experience with the lowest cost of ownership.

**EQUIPARTS**  
Repair Parts Specialists  
TOLL FREE: 800-442-6622  
PITTSBURGH: 412-781-9100  
[www.equiparts.com](http://www.equiparts.com)  
*That Hard to Find Part is Right Here !*



## ABOUT ZURN ELKAY WATER SOLUTIONS

Headquartered in Milwaukee, Wisconsin, Zurn Elkay Water Solutions is a growth-oriented, pure-play water business that designs, procures, manufactures, and markets what we believe is the broadest sustainable product portfolio of solutions to improve health, human safety, and the environment. The Zurn Elkay product portfolio includes professional grade water control and safety, water distribution and drainage, drinking water, finish plumbing, hygienic, environmental and site works products for public and private spaces.



**ELKAY**

*Halsey Taylor*

**hadrian**

 **WORLD DRYER**



**EQUIPARTS**  
Repair Parts Specialists

TOLL FREE: 800-442-6622  
PITTSBURGH: 412-781-9100

[www.equiparts.com](http://www.equiparts.com)

*That Hard to Find Part is Right Here!*

by Zurn Elkay Water Solutions