

TIGHT SEAL GASKETS

A Revolutionary Change in Toilet Sealing!



Tight Seal Gaskets are unlike any toilet seal gasket you've ever seen before! They are made of a special sticky elastomer that won't melt in the heat, and won't get hard in the cold. Tight Seal Gaskets spring back to their original shape when squeezed. They won't spread or get smashed like wax rings do. This ensures a tight seal, and allows you to reposition a toilet without ruining the gasket. It also allows for movement of the fixture without leaking. This amazing material enables you reuse these gaskets when replacing a toilet or urinal. They remain resilient and flexible, and will not break or become brittle. Tight Seal Gaskets are a dream for any plumber or maintenance person!

- Won't Melt or Become Hard
- Reusable
- Springs Back to Shape When Squeezed
- Allows Repositioning of Fixture
- Sticky Elastomer Ensures a Tight Seal

**No More
Scraping Wax!**



#67931
For Closet
3/4" Thick



#67932
For Closet
3/4" Thick with Flange



#67933
For Closet
1-1/8" Thick



#67934
For Closet
1-1/8" Thick
with Flange



#67935
Tank To Bowl Gasket.
Works on 2" and 3"



#67938
For Urinal

URINAL FLANGE REPAIR KIT

#65784

Quick & Easy Repair Without Removing the Old Flange!



*Wrap Metal Flange
Around Broken Flange*



*Close the Flange, Install the Bolts,
and You're Done!*

Kit Contains:

- Adjustable Metal Flange
- Neoprene Gasket
- 2" Bolts (2)
- Nuts (2)
- Washers (2)



SANI SEAL TOILET GASKET

One Size Fits All!

Try This Today!



#85977

This innovative gasket is designed to be a universal fit for all toilets and flanges. Sani Seal is made out of flexible and resilient material that moves with the toilet. Very easy to install. Allows the installer multiple attempts at setting the toilet. No more messy wax! Sani-Seal is easily stacked for deep flanges below 3/8".

Features:

- **Innovative Material:** Polyurethane foam allows it to be flexible, antimicrobial and strong. The material is durable enough to withstand hot and cold temperatures, including heat from Radiant Heated Floors.
- **User-Friendly:** Only one seal needed for flanges 3/8" above and up to 3/8" below. Can easily be stacked for any deep flanges below 3/8". Able to be repositioned when needed. Allows for multiple attempts at installation, even without a spotter.
- **No Mess:** No longer is messy wax involved when installing this gasket. If an existing toilet has previously been set on wax, there is no need to completely remove all the wax. Pre-existing wax will not compromise the functionality of the gasket.
- **Held In Place:** Sani Seal holds the bolts in an upright position to avoid any shifting.
- **Universal:** The size and material of Sani Seal allows for installation in any range of flanges, and is truly a one size fits all product.



EQUIPARTS
Repair Parts Specialists



Product Spotlight



WAX-FREE TOILET SEAL

The Last Toilet Seal You'll Ever Buy!



#80290 FITS 4"

#80289 FITS 3"

- No more guessing if there is a positive seal with the bottom of the toilet.
- A strong, flexible adhesive creates a strong seal to the bottom of the toilet.
- Seals on raised floors, wood, tile, linoleum and carpet.
- No need for flange risers or stacked wax rings.

CLEAN • EASY • QUICK

No messy wax, one piece design, and only two steps to install!



EQUIPARTS
Repair Parts Specialists



Product Spotlight

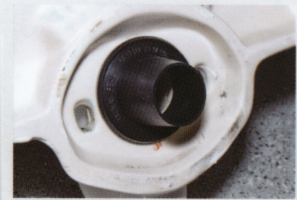
#82783

Fernco Wax Free **Urinal Seal**

Leak-Free, Hassel-Free, Worry-Free

Discover the Fernco Wax Free Urinal Seal advantages

Replace the seal **every time...**



...or do it **right the first time!**

1) WALL PREPARATION

NEW: Install the hanger brackets and the drain connection according to the urinal manufacturer's instructions.

REPLACEMENT: Urinal flange wall adapter must be clean and free from wax or old sealing material.



2) PREPARE URINAL

Urinal must be clean, dry, and free from wax or old sealing material.



3) INSTALL URINAL SEAL

Insert the Fernco urinal seal into the wall adapter far enough that it will not fall out during urinal installation. Remove white release paper from adhesive.



4) HANG URINAL

Hang the top of the urinal on the hanger brackets, then pivot the urinal down until the seal makes contact with the urinal. Reach behind the urinal and press the adhesive firmly onto the back of the urinal.



5) SECURE URINAL

Tighten the bolts to secure the urinal against movement.

Do not over-tighten or the urinal may break.

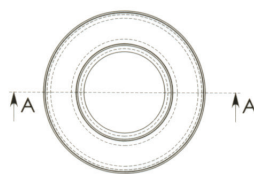
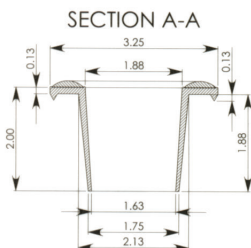


6) CHECK FOR LEAKS

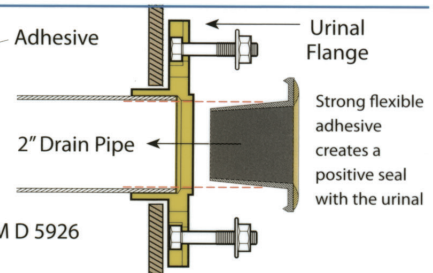
Connect water supply and verify the drain connection is leak free.



DIMENSIONS



- Gasket Material: Plasticized PVC 75 Conforming to ASTM D 5926
- Adhesive: Permanent Pressure Sensitive Adhesive



*Patent Pending

Pittsburgh: 412-781-9100 • Toll Free: 800-442-6622 • Fax: 412-781-3085

www.equiparts.com • www.equipartsdrinkingfountains.com

LIQUILOCK™

Solidifies Water For Easy Toilet Removal!



#79626

- Prevents Water Spills During Toilet Removal
- Gel Formed in 4 minutes
- Non-Toxic, Lo-V.O.C.
- Can also be used in the toilet tank, and in urinals.

LiquiLock Gel will solidify water in the toilet bowl providing a clean, fast and easy method for removal of the toilet. Quick-acting LiquiLock Gel formula will solidify residual water in the toilet bowl within 4-5 minutes. The toilet bowl water will remain in a gel form during removal period and will dissolve when additional water is added.

DIRECTIONS FOR USE

1. Turn off water supply line to toilet. 2. Flush toilet and hold down handle. 3. Empty entire contents of non-toxic LiquiLock into remaining water. For 3.5 gpf (gallon per flush) or larger toilets, use 2 packets of LiquiLock simultaneously into the bowl. Let LiquiLock absorb for a minimum of 4 minutes allowing water to solidify. 4. Keeping toilet level, carefully remove as needed

REINSTALL TOILET

1. Reconnect and turn on water supply line to the toilet. 2. Allow toilet tank to fill with water and flush toilet. Water may fill toilet bowl. 3. Let LiquiLock sit for a few minutes until water liquefies and flushes.

"LAST DROP" SUCTION GUN

#03007



(Note: This tool really sucks!)

Installing a new toilet? Remove all the water from the tank with the "Last Drop" Suction Gun! You'll be able to change toilets, ballcocks, flush valves and tank bolts without water spillage! You can also unclog floor drains by removing the rosette from the tube and sucking out the sand and water. The "Last Drop" Suction Gun is corrosion resistant and has replaceable parts so it will give you many years of service!

SLOAN®

TMO Single-Flush Side Mount Retrofit

#85606

Smart Sense Technology™

Sloan® SFSM flushometers are equipped with Smart Sense Technology™, which applies extended range and logic techniques to significantly reduce water usage in high-use urinal applications. When there is a continuous line of people, the maximum amount of water used is only 2.5 gallons, assuming a 0.5 GPF diaphragm kit, regardless of the number of users.

Automatic Operation

The sensor sets the flushing mechanism when the user is detected, and completes the flush when the user steps away.

Manual Operation

Sloan's SFSM flushometers can also be activated manually by pushing the black TMO button.



Hygienic

Touchless, sensor activation eliminates the need for user contact to help control the spread of infectious diseases. The 72-Hour Sentinel Flush keeps fixture fresh during periods of non-use.



EQUIPARTS
Repair Parts Specialists



Product Spotlight

ZURN EZ-FLUSH

With Metal Cover



#40265105



- Fits Zurn or Sloan
- Sensor-operated for hands-free performance
- Low battery light notification
- Standard "C" batteries supplied
- Courtesy flush button
- Time savings - no water shut-off required for installation or battery replacement
- Fixtures stay cleaner longer
- Helps eliminate odors
- ADA compliant

TOTO UNIVERSAL FLAPPER



#88689

Toto Red with Plastic Insert

Replaces the following models:

#08662 (THU138S)

(THU175S)

#58084 (THU331S)

#54904 (THU140S)

#83741 (THU299S)

(THU2535)

#81747 (THU277S)

(THU347S)

#SP11846 (THU275S)

(THU322S)

(THU369S)

GROUND JOINT CONTROL STOP ADAPTER

#80819

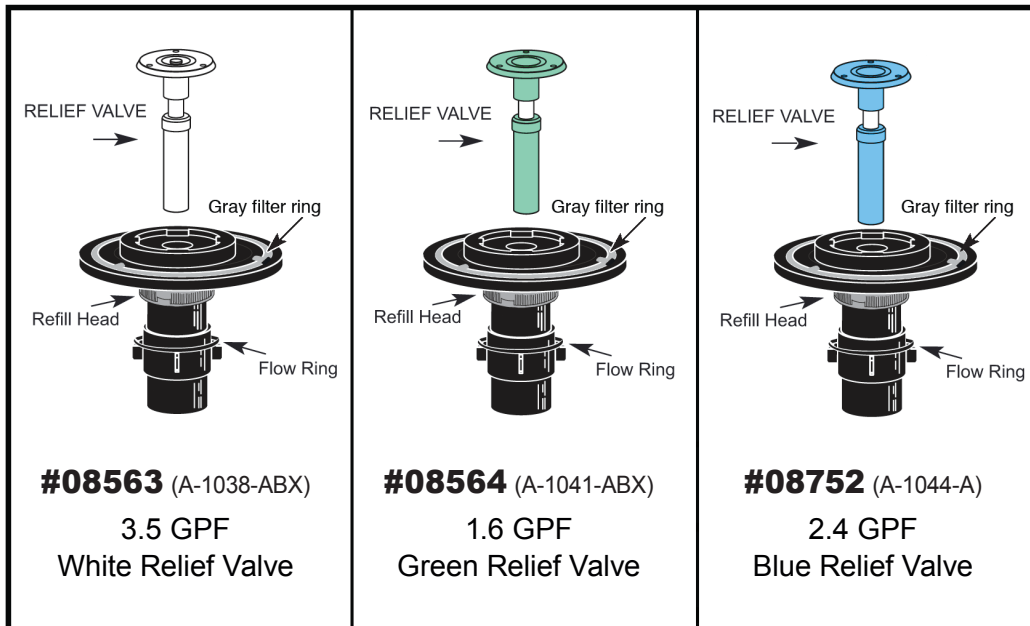


- Retro-fit adjustable tailpiece valves on existing ground joint stops.
- Converts Delany and Old Style Sloan stops
- Upgrade valves
- Saves time and avoids potential behind-the-wall issues

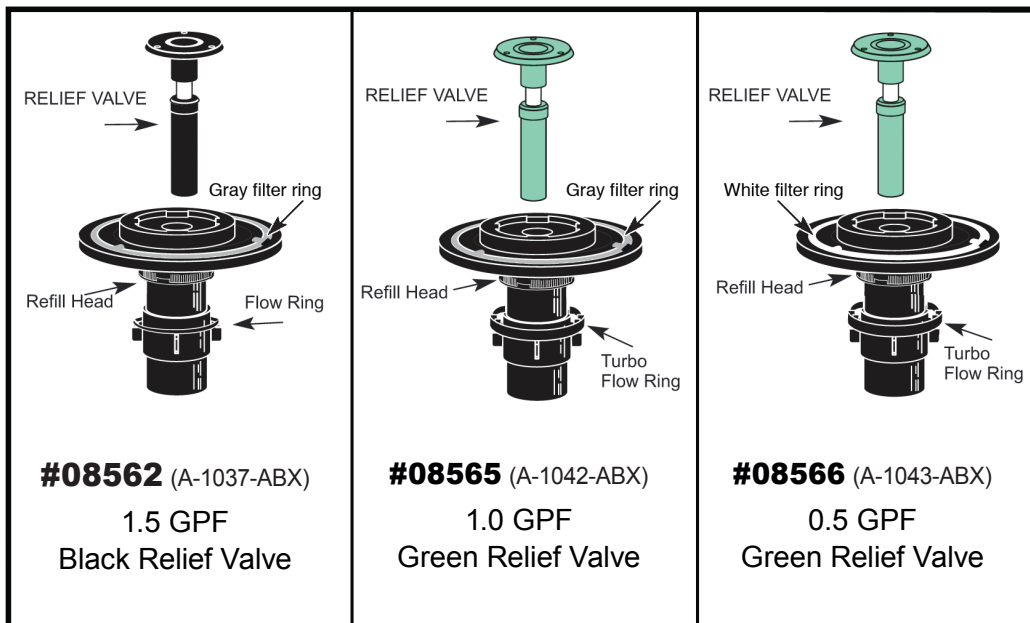
SLOAN ROYAL DUAL FILTERED DIAPHRAGM KIT IDENTIFICATION CHART

SLOAN

Closets - Diaphragm Inside Parts Kits - Non-Rebuildable



Urinals - Diaphragm Inside Parts Kits - Non-Rebuildable



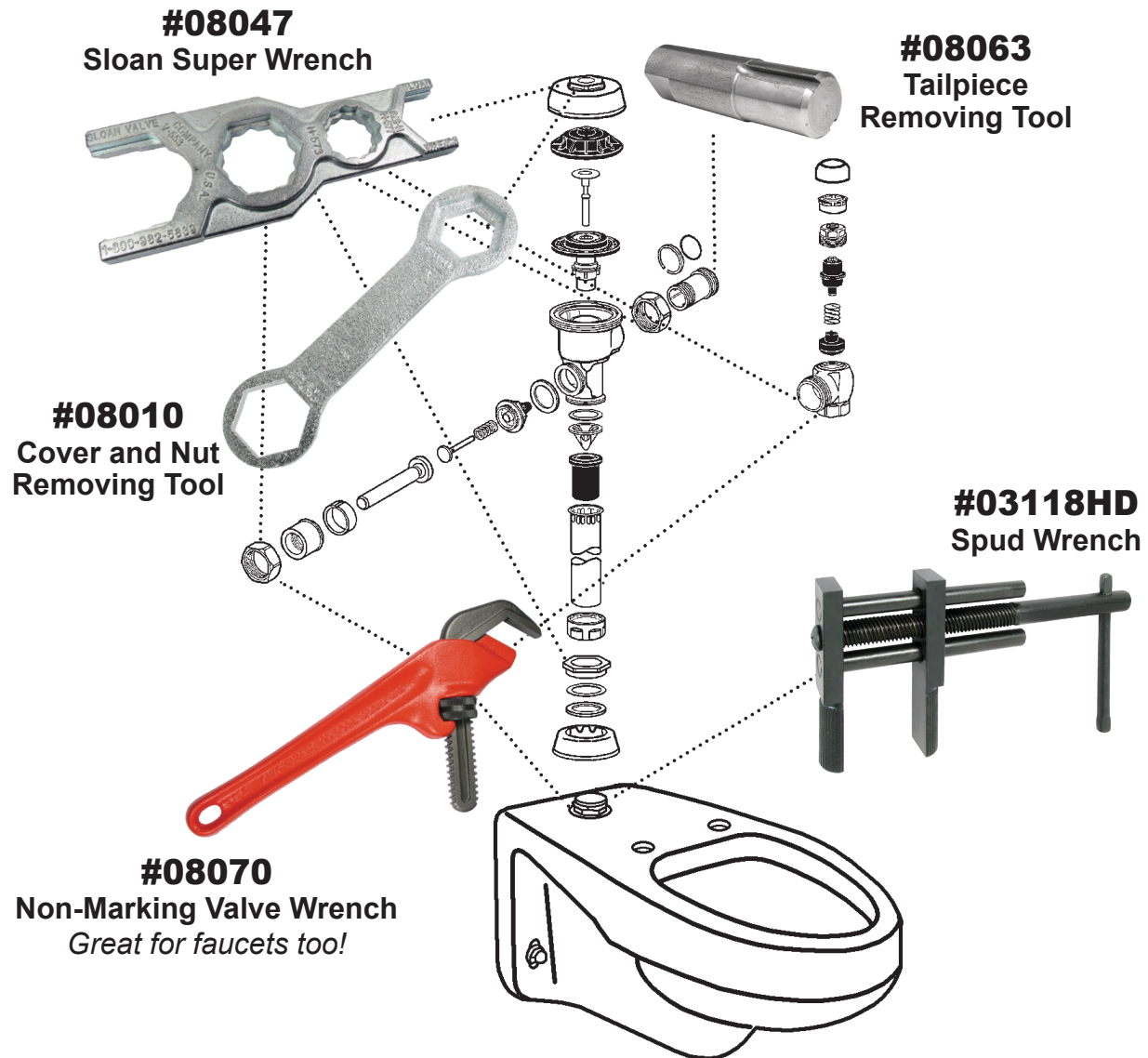


EQUIPARTS
Repair Parts Specialists®



Product Spotlight

Flushometer Tools



MEGAPRO® DRIVERS

#37696



The Original

The most popular Megapro® driver! Loaded with 7 double end professional quality bits, this assortment provides the 14 most popular tips for driving screws. All bits are conveniently stored right in the handle! The shaft opening serves as a 1/4" hex driver.

#37697



Tamperproof

This 15-in-1 is a must for all commercial and industrial tradesmen. The Tamperproof assortment includes the most popular security bits, such as Spanners, Hex Pins and Torx Pins. All bits are conveniently stored right in the handle! The shaft opening serves as a 1/4" hex driver.

#37698



ShaftLOK

Locking shaft eliminates the danger of bits falling out of the shaft when getting partially stuck in the fastener. 6" and 10" locking extensions get you into hard-to-reach places. This 15-in-1 driver holds 7 double end professional quality bits, including the most popular tips for driving screws. All bits are conveniently stored right in the handle! The shaft opening serves as a 1/4" hex driver.

#39339



Precision

This precision screwdriver is designed specifically for those working with (and on) electronics, technology, security, jewelry, and any other repairs in a "micro" environment. This screwdriver comes with 24 of the most popular precision bit tips – all conveniently stored in the Megapro Patented Retractable Bit Cartridge!

#37702



Ratcheting

This 13-in-1 ratcheting screwdriver delivers over 225 inch lbs of torque strength. Precision 28-tooth ratchet design with rubberized cushion grip makes driving faster and easier. Loaded with 6 double end professional quality bits including the most popular tips for driving screws. All bits are conveniently stored right in the handle! The shaft opening serves as a 1/4" hex driver.

#37710



HVAC

Perfect for the American HVAC installer, this driver is loaded with 6 double end bits including the Schrader Valve Stem bit, and the DoubleLok Phillips #2 Combo bit which can be used in any 1/4" quick change chuck. It also features a Square Awl Reamer for punching through sheet metal. All bits are conveniently stored right in the handle! The shaft opening that serves as a 1/4" hex driver.

#38187



Camo Outdoors

The perfect driver for rugged outdoor use! Great to use on ATVs, snowmobiles, etc. This 14-in-1 driver includes 6 double ended bits, and a round-awl to undo rain-soaked or over tightened knots on ropes. All bits are conveniently stored right in the handle! The shaft opening also serves as a 1/4" hex driver.

MEGAPRO® ACCESSORIES

IMPACT NUTSETTERS

#38123



- Includes sizes 1/4", 5/16", 3/8", 7/16", and 1/2".
- Color coded for easy ID
- Made of durable machined S2 steel
- Black oxide finish protects against corrosion

SQUARE+PHILLIPS+TORX IMPACT 10PC BIT SET

#38122



- Includes sizes SQ1, SQ2, SQ3, PH1, PH2, PH3, PR2, T15, T20, AND T25.
- Color coded for easy ID
- Made of durable machined S2 steel
- Black oxide finish protects against corrosion

T-HANDLE NUT DRIVER

Laser welded construction provides up to 620 inch pounds of torque



- #38124** 1/4"
- #38125** 5/16"
- #38126** 3/8"
- #38127** 7/16"
- #38128** 1/2"

4 IN 1 POCKET SCREWDRIVER

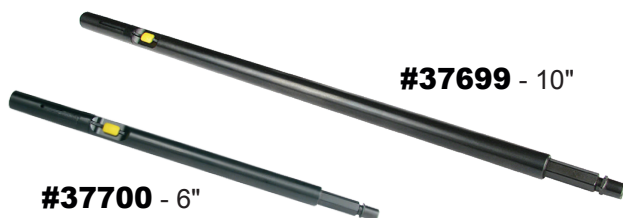
#37756



The 4-in-1 Pocket Driver is a handy tool that features a double ended slot bit and a double ended Phillips bit. It's perfect for a tool box, glove box, or even to clip onto your shirt, tool pouch, or tool belt

LOCKING EXTENSIONS

Locks into ShaftLOK driver shaft, providing a slim profile into those hard-to-reach places. Clearance: .375" min.



#37700 - 6"

#37699 - 10"

LED LIGHT WITH CLIP

#37701



Clips on to any Megapro driver for better visibility in dark areas. Includes batteries



EQUIPARTS
Repair Parts Specialists



Product Spotlight

EZ CHANGE FAUCET TOOL

#38631

One Tool for Common Faucet and Sink Strainer Removal and Installations

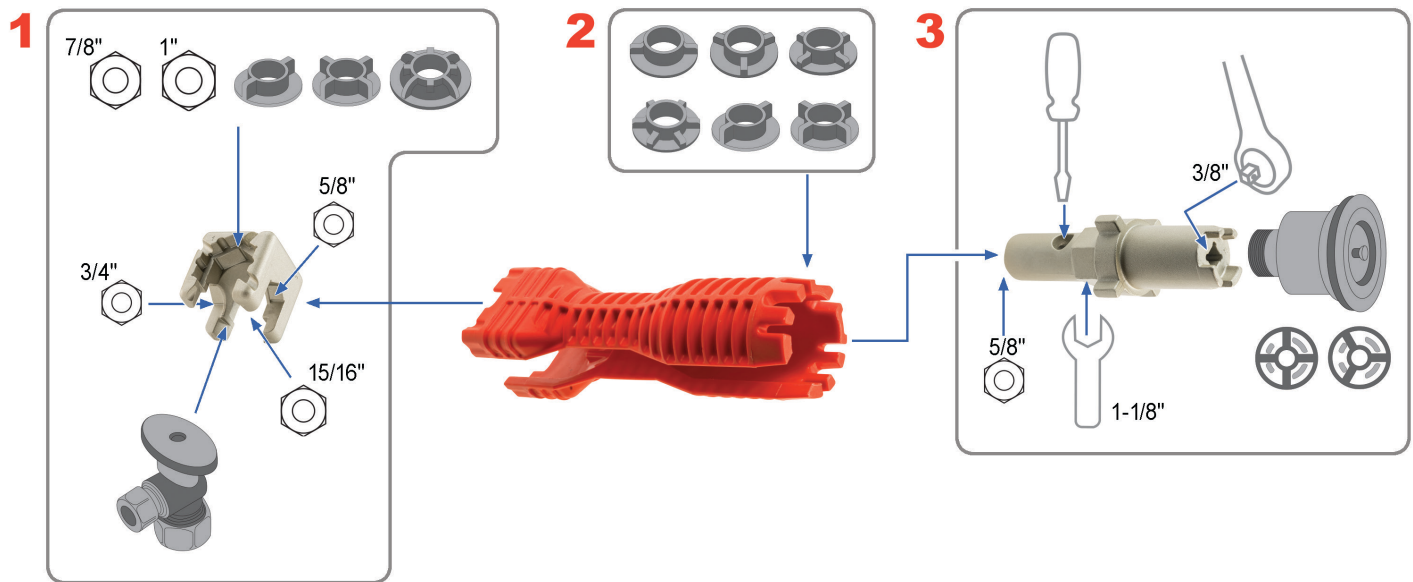


- Unique cubed insert provides a variety of common nut sizes.
- Ideal for most common 2, 3, 4, and 6 tab mounting nuts.
- Wrench for tight shut-off valves.
- Retainer for 3 or 4 slot strainer baskets.
- 5/8" deep welled socket for many single hole mountings.
- Short body for clearance in tight spaces.



EZ Change Faucet Tool Inserts

#38631



1 CUBED METAL INSERT

- 5/8", 3/4", 7/8", 15/16" and 1" hex nuts
- Supply line nuts
- Supply stop installation & removal

2 HEAVY DUTY PLASTIC BODY

- Common flange nuts (2, 3, 4, and 6 tab)
- Open slot allows tool to wrap around supply lines for easy access to nuts

3 CYLINDRICAL METAL INSERT

- 3 and 4 slot sink strainer baskets
- 3/8" socket connection
- 1-1/8" hex for wrench use
- Hole to insert screwdriver for extra leverage
- Socket for 5/8" hex nuts

THE DRIP-PROOF TOILET PLUNGER BAG

#36178

(Plunger Not Included)



A sanitary solution to walking around with a dripping plunger! After use, just toss your plunger into the bag, zip it up, and go! No mess, no hassle. Includes a mesh side panel for air circulation.

THE DRIP-PROOF CLOSET AUGER BAG

#36177

(Auger Not Included)



A sanitary solution to walking around with a dripping auger! This durable bag features a wide mouth end with a heavy duty zipper so the closet auger easily slides in. After use, just toss your auger into the bag, zip it up, and go! No mess, no hassle. Three vent holes allow the auger to dry between jobs, and a thick shoulder strap keeps your hands free to carry the rest of your tools to the job.

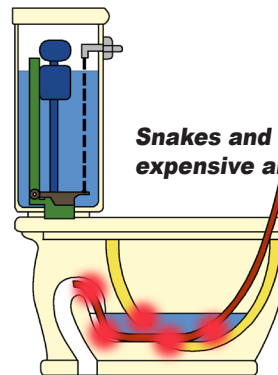


CLOSET BOWL SHIELD

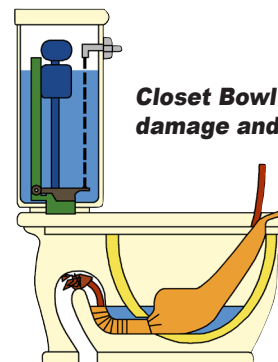
Stop the Scratches!

#83045

- A Necessity When Using Electric Machine vs. Manual Auger
- Reduce Scratch Marks, Chipping and Scraping of Bowl
- Simple to Use
- Fits Most Toilets
- Reusable: Use Time and Time Again
- Professional: Leave a Job Knowing Your Work Was First Class
- Versatile: With or Without the Snoot, Doubles as a High Capacity Funnel



Snakes and augers can cause expensive and embarrassing mistakes.



Closet Bowl Shield reduces needless damage and creates a professional image.

FLEXIBLE DRAIN CLEANING TOOL

Unclog Drains Quickly & Easily!



This new Drain Cleaning Tool is more efficient than other drain cleaning tools. It's length makes it reach further into the pipe - through S and P traps to the problem area. Its single side barb and spearhead design helps it move through the pipe smoothly, and rotate through any resistance while simultaneously grabbing onto any hair or debris stuck in the drain.

#38010

Flexes Around P-Traps and S-Traps!

- For sinks, tubs, and shower drains
- Securely grabs clogs all the way through the P or S trap.
- 26" length allows far reach into pipe
- Patented single-sided barb and spear head design helps to navigate the drain pipe easily
- Durable poly construction

THE HINGE DOCTOR®

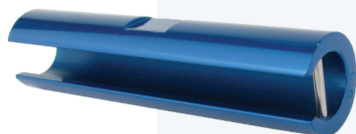
Fix Sagging Doors in Fifteen Seconds!

The **Hinge Doctor**® is the time saving, hinge restoration tool you have been looking for. Sagging doors repaired in seconds! We are very serious here. You need to see and use it to believe it. Hinge Doctors® are available in handy kits or individually.



#36752

For Standard Commercial
4-1/2" x 4-1/2" Butt Hinges



#36754

For Ball Bearing & Larger
Commercial Hinges



#36755

For Prison and
Institutional Hinges, and
Standard Spring Hinges



Hinge Doctor Kit

#36758

Kit includes all three Hinge Doctors,
as well as "The Hulk" for most
residential hinges.

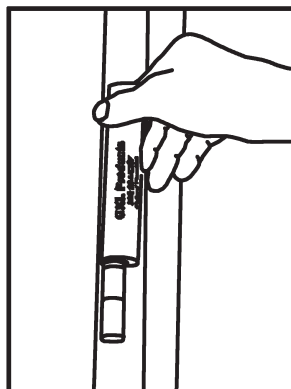


THE HINGE DOCTOR®

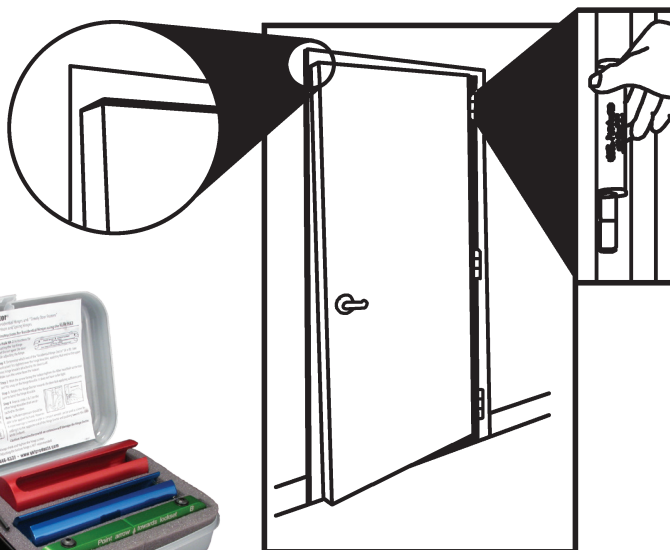


INSTRUCTIONS: This tool is designed to adjust new, worn, or improperly adjusted commercial butt hinges that cause the door to sag or drag. To fix the door, slip the tool over the top door hinge, and open the door. This action causes the door hinge to bind while the tool is in place.

Open the door only three to four inches past the point where it binds against the tool, then remove the tool from the hinge, check the door, and repeat if necessary.



Usually, it is only necessary to adjust the top hinge. However, if there is still a large gap between the door and the frame (above the top hinge) after you've adjusted the top hinge, then adjust the center hinge as well.



NEVER adjust the bottom hinge unless the leading edge of the door hits the bottom portion of the door jamb.

Hinges that have been adjusted too much will be hard to close. If this happens, place a 1/8" allen wrench right behind the knuckles and between the two plates of the hinge, and then push the door closed. This will reverse the first adjustment. Adjust the door again as necessary with the hinge adjuster tool.

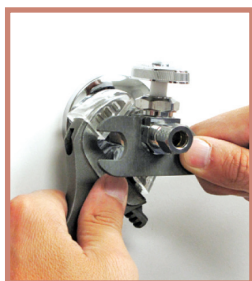
ANGLE STOP COMBO WRENCH

Universal Fit! One Tool Does it All!

#37874



- For angle AND straight stops!
- Adjustable wrench up to 1/2"
- Non-marring soft jaw covers protect finished surfaces
- Easy-store multi-wrench for angle stops and compression fittings stores magnetically in handle
- Reversible jaw for extra wide grip



Straight Stops



Angle Stops



Supply Lines



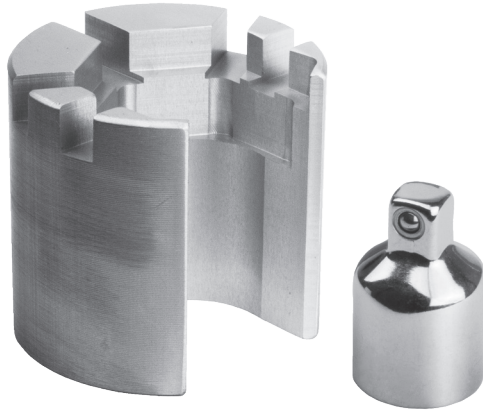
**Non-Marring
Plastic Jaws**



**Reversible
Lower Jaws**

"BASIN BUDDY"

Universal Basin Nut Wrench



#37314

The Basin Buddy is the ultimate faucet nut removal tool. Used with a ratchet, (not included) the Basin Buddy loosens the most stubborn nuts with ease. This tool features a patented cut-away body that wraps around existing supply tubes, and allows for one-handed operation. Includes 3/8" ratchet adapter.

WORK LIGHT WITH LANTERN AND HOLSTER

#36995

250 Lumens of Intense White Light!

- Outstanding LED flashlight offers 250 lumens of intense white light
- COB* lantern outputs 190 lumens.
- Side-positioned ON/OFF button with Soft Touch Technology
- Body extends to reveal COB* work light
- Length: 6-1/2" closed, 8-7/8" extended
- Convenient no-roll design
- Anodized aircraft grade aluminum
- Water and Impact resistant
- Powerful magnetic base



Convenient holster slides easily onto your belt!



***COB** (Chips on Board) - An innovation in LED technology. COB features smaller, easier clustered LED chips that are mounted directly to the circuit board. These LEDs work together as one lighting module. Because of the compact design, COB outperforms traditional lighting by up to 50 times the light output per centimeter of light surfaces.



EQUIPARTS
Repair Parts Specialists



Product Spotlight

VERSAPACK STUFF SORTER

*The Versatile, Portable,
Storage Organizer*

#37684

Ideal for all Industries:

- Plumbing supplies
- Heating/AC supplies
- Electrical supplies
- Drywall screws
- Nails, screws, nuts, bolts
- Fishing and/or hunting gear
- Agricultural supplies
- Automotive parts
- Camping supplies
- Arts and crafts supplies
- Garage/Shop use
- Everyday household items



**Mix trays
to suit your
needs!**



Extra Dividers #37688

Divide your 2 1/2" trays into 8 sub-sections! These handy dividers can be used only with our 2 1/2" trays, and come packaged 4 per bag.



Comfort Grip #37695

Place these cushioned bucket handles on your pail to give your fingers a break!

Also available for the Stuff Sorter:

#37692

**Prime &
Glue Mate™**

The Prime-N-Glue Mate keeps cans conveniently together for easy application and transport. The holders safely secure most quart and pint cans and display "OSHA" friendly/visible labels on the outside.



#37685

Buckreel™

Enables you to store and transport your extension cords, high pressure air hoses, ropes, Christmas lights, etc. inside a 5 gallon plastic bucket. This keeps your equipment clean, tangle and damage free.



Capacities

- Electrical Extension Cords, 10 gauge: 50ft., 12 gauge: 100 ft.
- 3/8 ID High Pressure Air Hose: 50ft.
- 3/8 rope: 50ft.

Pittsburgh: 412-781-9100 • Toll Free: 800-442-6622 • Fax: 412-781-3085

www.equiparts.com • www.equipartsdrinkingfountains.com



QUICKSTOP

Talon - Fire Sprinkler Tool

#36841



AS SEEN
ON ABC'S
"SHARK
TANK"

**Quickly Stops
Fire Sprinklers
without Shutting Down
the Sprinkler System!**

- Saves water and reduces damages
- Easy to use
- Single hand operation
- Engineered to align itself to the sprinkler head
- No fire training needed to operate
- Works on recessed heads
- Tested to hold 100% water tight up to 350 PSI
- Designed to release when heated, allowing the tool to function as a temporary sprinkler should a second fire start.
- Reusable

The ONLY sprinkler tool that stops 1/2" and 3/4" upright, pendant, and sidewall fire sprinklers whether they are intact, damaged, or sheared!



QUICKSTOP

Stories from the Field



"We had a fire sprinkler accidentally set off by a woman hanging a coat hanger on the sprinkler on the 22nd floor of a high rise condo complex. We used the Quickstop Talon, and were able to stop the water before the building engineers could secure the main water shut off. The highrise condo ordered our tools and now keeps them on site just in case someone tries to hang their clothes on a sprinkler head again. Hopefully next time they can stop the damage before we even arrive."

- Matt Scarpuzzi, President and Founder of Quickstop Fire Sprinkler Tools

A recessed head was accidentally hit by a teacher moving a projector in San Diego. The classroom was evacuated, and the teacher notified building management. The photo is of the Quickstop tool that was put in place within minutes of the sprinkler being sheared off. The fire department located the water shut off, but it was locked for security reasons. The building representatives were unable to locate keys to the shut off, and so the fire department was unable to turn off and drain the system for almost 20 minutes. This 20 minutes equates to almost 750 gallons of water that would have poured out into the classroom if the Quickstop would not have been in place. The classroom was located on the 16th floor of the building with a law firm just below. Another great save for the Quickstop, and another reason to keep one in your building!



A uthorities say a guest at a Delaware County Hotel broke a fire sprinkler, causing hundreds of people to be evacuated, and thousands of dollars in damage. It happened on a Sunday around 5:00 a.m. at the Wyndham Garden Hotel in Essington. The hotel evacuated their 600 guests. Hotel staff had to work overtime to clean up the 50 rooms that sustained thousands of dollars in water damage. Should have had a Quickstop!

HURRICONE

Cordless Floor Dryer

Greatly Reduce the Risk of Slip & Fall Accidents!

Wet floors are a hazard. There are 25,000 slip & fall accidents every day, according to the National Safety Council. The average cost of a slip & fall injury exceeds \$12,000. The average cost to defend a slip & fall lawsuit is \$50,000. Safety cones and other barricades can warn people about wet floor, but they do nothing to alleviate the hazard. The Hurricone assists in drying the floor with a continuous flow of air running 360° around, and up to 15 feet in diameter. It comes with a corrosion, chemical, and impact resistant base, 2.5" locking casters, fan finger guard, battery level indicator, and sealed lead acid battery pack.

- *A continuous flow of air dries floors 360° around the unit, and up to 15' in diameter.*
- *Decrease your floor drying time by up to 90%*
- *Cordless/Rechargeable. Runs up to eight hours on a replaceable battery pack.*
- *Safety cones can be stacked on the unit for easy storage and transportation.*
- *One-year warranty*

#38004



Use In:

- | | | |
|-------------|-------------------------|----------------------|
| • Airports | • Amusement Parks | • Convention Centers |
| • Hospitals | • Department Stores | • Grocery Stores |
| • Libraries | • Nursing Homes | • Restaurants |
| • Stadiums | • Industrial Facilities | • and many more! |

PROTECTIVE GLOVES

The BEST Gloves EVER! You've GOT to Try These!

MaxiFlex® Elite™ Ultra Light Weight Seamless Knit Nylon Glove

The lightest, fully breathable coated glove!



- Nitrile Coated Micro-Foam Grip on Palm & Fingers
- 30% thinner than traditional foam nitrile gloves
- Patented micro-foam nitrile coating offers 360° breathability
- Ultra light-weight liner creates smooth and rounded fingertips maximizing sensitivity, dexterity, and tactility
- 100% Silicone Free
- Color: Slate Blue Palm, Navy Back

- #36967** XSM MaxiFlex Elite
- #36968** SM MaxiFlex Elite
- #36969** MED MaxiFlex Elite
- #36970** LG MaxiFlex Elite
- #36971** XL MaxiFlex Elite
- #36972** XXL MaxiFlex Elite

MaxiFlex® Ultimate™ Seamless Knit Nylon / Lycra Glove

Precision handling in dry environments!



- Micro-Foam Nitrile coatings are compatible with light oils and will provide a good grip and excellent abrasion resistance
- Nitrile Coated Micro-Foam Grip on Palm & Fingers
- Knit Wrist helps prevent dirt and debris from entering the glove
- 100% Silicone-free
- 25% thinner than most foam nitrile gloves on the market
- The micro-cup finish allows for a controlled and optimized grip
- Color: Black Palm, Gray Back

- #36973** XSM MaxiFlex Ultimate
- #36974** SM MaxiFlex Ultimate
- #36975** MED MaxiFlex Ultimate
- #36976** LG MaxiFlex Ultimate
- #36977** XL MaxiFlex Ultimate
- #36978** XXL MaxiFlex Ultimate

MaxiDry® Ultra Seamless Knit Lightweight Nitrile Glove

Precision handling in oily and wet environments!



- Micro-Foam Nitrile coating is compatible with light oils and will provide a good grip and excellent abrasion resistance
- Fully Dipped with Seamless Knit Nylon / Lycra Liner and Non-Slip Grip on Palm & Fingers
- Knit Wrist helps prevent dirt and debris from entering the glove
- The micro-cup finish allows for a controlled and optimized grip
- 100% Silicone-free
- 25% thinner than most foam nitrile gloves on the market
- Color: Black Palm, Purple Back

- #36962** SM MaxiDry
- #36963** MED MaxiDry
- #36964** LG MaxiDry
- #36965** XLG MaxiDry
- #36966** XXLG MaxiDry

SOLID BRASS DOOR STOPS

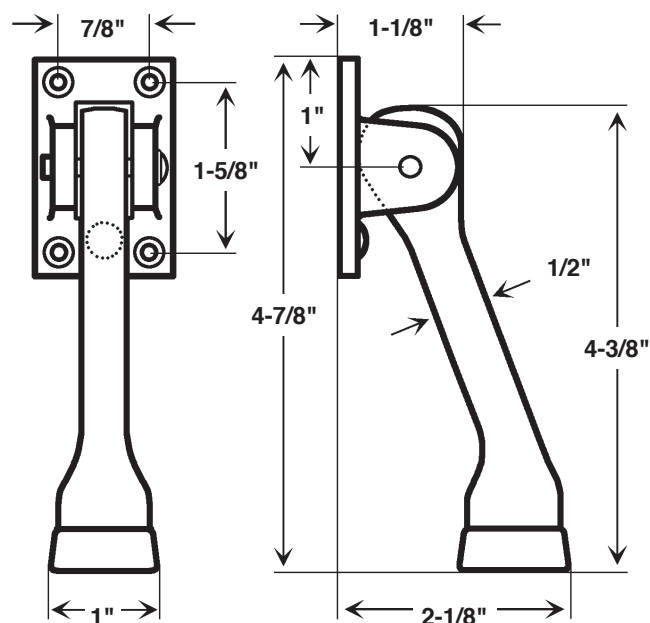
Door Mounted - Kick Down



4 Hole

#01168
Dull Chrome Door Stop

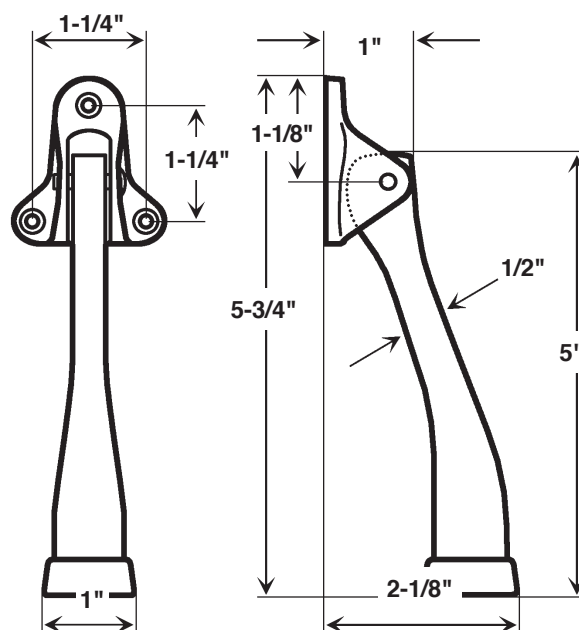
#01169
Polished Brass
Door Stop



3 Hole

#01170
Dull Chrome Door Stop

#01171
Polished Brass
Door Stop





EQUIPARTS
Repair Parts Specialists



Product Spotlight

STEP-N-PULL®

HANDS FREE DOOR OPENER

#37663



Exit the restroom without touching the door handle!



- Step-N-Pull® gives you the option of opening the door without touching the handle.
- Reduce the spread of germs.
- Reduce or eliminate paper towel expense/usage.
- Perfect compliment to automatic hand dryer.
- Low one-time cost - Designed to last the life of the door.
- Your customers and employees will appreciate having the Step-N-Pull® option.
- Works great on commercial latchless doors (i.e. entry door of a laundromat or auto parts store) when the users hands are full.
- Made with 70% recycled aluminum.
- Made in the U.S.A.



EQUIPARTS
Repair Parts Specialists



Product Spotlight

UNDER THE COUNTER THERMOSTATIC TEMPERING VALVE

#54621

POWERS
A WATTS INDUSTRIES CO.

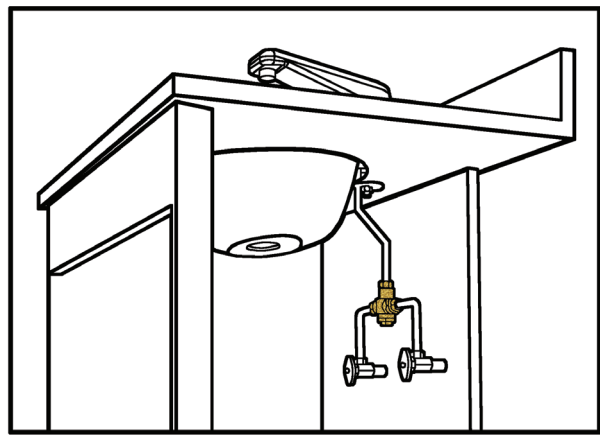


Do you need a safety-enhanced tempering valve for fast, easy installation of new or existing applications? Take a look at the Equiparts Hydroguard Valve. It's an ideal solution for:

- *Electronic Faucets*
- *Metering Faucets*
- *Two handle mixers*

Superior Design ensures long-term reliability:

- 3/8 compression connections
- New motor design improves performance
- Solid Brass construction enhances durability
- Adjustable temperature with lock nut to prevent tampering
- Factory set at 105° F
- Includes integral checks





NAVIGATOR®

THERMOSTATIC MIXING VALVE

#82302



FEATURES:

- **FLEXIBLE** - Comes with 1/2" IPS or 3/8" Compression Fittings
- **MOUNTABLE** - Supplied Bracket Neatly Mounts Securely to Wall
- **PRICED TO PERFORM** - Code Approved, Budget Priced
- **REPAIRABLE** - Maintenance Friendly

SPECIFICATIONS:

Inlet Connections: 1/2" NPT or 3/8" Compression

Outlet Connection: 1/2" NPT or 3/8" Compression

Temperature Range 95-125°F

Maximum Pressure: 125 PSIG

Inlet Temperature, Hot : 120-180°F

Inlet Temperature, Cold: 33-80°F

Minimum Temperature Differential
(from valve set point): 10° F

82302BRKT **Optional Wall** **Bracket**



INSTA-CLAMP™



Click the part number of the clamp you want, and you'll be taken to its listing on our website where you can get a quote!

PART #	COPPER PIPE SIZE	OD
#81974	1/2"	5/8"
#81975	3/4"	7/8"
#81976	1"	1-1/8"
#81977	1-1/4"	1-3/8"
#81978	1-1/2"	1-5/8"
#81979	2"	2-1/8"
#81980	2-1/2"	2-5/8"
#81981	3"	3-1/8"
#81982	4"	4-1/8"
#65809	5"	5-1/8"
#65655	6"	6-1/8"

SPECIFICATIONS:

- Panel: Stainless steel type 304
- Bridge plate: Stainless steel type 304
- Gasket: Molded step waffle NBR gasket design
- Rated at 150# PSI
- Lugs: Ductile iron per ASTM A536 with Galvanized plating finish
- Bolt and Nut: Zinc-Chromate finished carriage bolt, nut and washer

INSTA-CLAMP™ PLUMBER'S KIT



#81990

Kit Contains:

- One size of each Insta-Clamp™ from 1/2" to 2"
- 12" Canvas Tool Bag
- 24" OD Tape Measure

- Insta-Clamp™ can repair M, L, and K copper tubing solder joint pipe leaks on tees, 90s, 45s, reducers, valve ends, threaded adapters and on straight pipe.
- Insta-Clamp™ is the only copper repair clamp on the market that will stop all leaks with a 360 degree seal on both fitting and tube side on copper solder joints.
- Insta-Clamp™ is made specifically to fit the copper tube O.D. on one end and the solder joint fitting O.D. on the other end. The unique stepped rubber design creates a full 360 degree seal around both surfaces.
- Insta-Clamp™ is designed to be only 3" wide with the step offset in the rubber seal, the 60 percent seals on the copper tube and the other 40 percent on the solder joint connection. The 60/40 ratio in the rubber width allows the repair clamp to fit into tight areas.
- Nothing compares to the Insta-Clamp™ for 100 percent positive stop of leaks in copper tube and sweat fittings.

Individual Insta-Clamps available in sizes ranging from 1/2" to 6". See other side.

EMERGENCY PIPE REPAIR CLAMP

The quick, easy, & professional way to temporarily repair a burst, perforated, or leaky pipe!



#38012
For 1/2" Pipe

#38013
For 3/4" Pipe

Save the Day!

This repair clamp is a great item to have in virtually any building. In cases of emergency, such as when a pipe has burst in an area where the water supply cannot be shut off, this clamp can reduce water damage and save a lot of time, energy, and money, not to mention water!

Use On:

- Use on Copper, CPVC or PEX piping
- Both domestic and commercial heating & water pipes
- Frost damaged or perforated water pipes

No tools required!

Simply open the device, center it around the problem area, firmly close both housing members, engage the latch mechanism, and close the device around the problem area with a squeeze of your hand.

FREEZE-FIX

Ideal For Repairing Damaged Pipes!

Use FREEZE-FIX to repair and reinforce leaking pipes due to corrosion or freezing. FREEZE-FIX can be applied to all types of pipes, even underwater.



Before Freeze-Fix



After Freeze-Fix

Part#	Pipe Size	Part#	Pipe Size
#81319	1/4" - 1/2"	#81321	2" - 2-1/2"
#81320	3/4"	#81322	3"
#05397	3/4" - 1-1/2"	#81323	4" - 5"

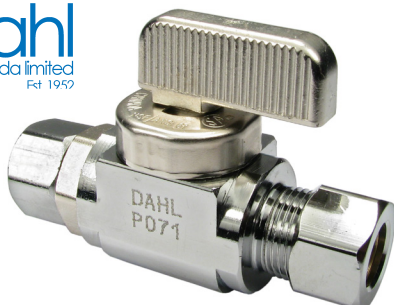
EASY TO USE

- Simply clean surface of pipe
- Cut off the necessary epoxy putty
- Knead until two colors are blended
- Apply putty to split or leak area
- Activate tape in water
- Wrap entire area
- **THE JOB IS DONE !**

FREEZE-FIX KITS CONTAIN:

- Everything you need to make a repair!
- POW-R WRAP 2" x 60" resin-impregnated fiberglass tape, which is activated by immersing in water
- One ounce "STIC-O-STEEL" epoxy putty
- Protective gloves
- Easy to follow instructions and illustrations

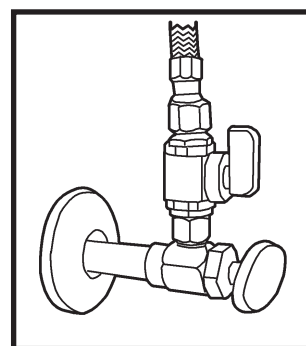
ADD-A-STOP REPAIR VALVE



#51407 3/8"

#56885 1/2"

***This Heavy Duty
Valve Piggybacks
Existing 3/8"
Compression Stops!***



***No Need to Replace
Existing Stop!***

The **ADD-A-STOP REPAIR VALVE** is manufactured to stringent standards. Each design is put through a rigorous 250,000 cycle test before it is manufactured. Extremely close tolerances are maintained using computer controlled equipment to ensure each valve meets strict specifications. Plumbers who rely on **ADD-A-STOP REPAIR VALVES** don't worry about customer callbacks. Each valve is tested before it leaves the factory. Providing quality products is an Equiparts tradition.

STOPS WATER FAST!

The easy to operate 1/4 turn shut off valve prevents leaking. The positive-force-turn stops the water flow instantly and completely.

BALL STYLE WON'T FREEZE UP !

The ball style valve helps keep the ADD-A-STOP turning operation clean. Conventional screw style valves tend to collect deposits, corrode, and eventually freeze up or seize the mechanism.

NO PLASTIC WASHERS OR PACKING!

Uses heat resistant, pliable "O" rings and seats that resist cracks and leaks.

LEAKING IS NOT A PROBLEM!

The heavy duty brass construction insures durability. Plus, it won't break down when exposed to chlorine, chloramine and other water disinfecting chemicals.



EQUIPARTS
Repair Parts Specialists



Product Spotlight



GUARDIAN DRAIN-LOCK

Benefits of the Drain Lock:

- *Prevents damage to P-traps from cabling*
- *Prevents clogs*
- *Cuts down on solid waste*
- *Prevents floating rags/bags from blocking pipe exit*
- *Prevents blockage in common area/city main lines*

#84490	2"
#84491	3"
#84492	4"
#84493	2" Torx Key
#84494	3" and 4" Torx Key



The Guardian Drain Lock is a new, innovative device designed specifically for floor sinks to prevent debris from clogging the pipes. Floor sinks do not come with the ability to lock down strainers. Staff and night cleaners are constantly removing the existing strainers and even throwing them away, allowing debris to pass into the pipes. Plumbers are amazed at what they find clogged in the drain lines. Silverware, plates, plastic ramekins, straws, avocado seeds, lemons, rags, as well as smaller debris get stuck in the P-Trap. The Guardian Drain Lock will reduce or eliminate these clogs, and allow you to avoid costly expenditures. Made of stainless steel, the Guardian Drain Lock is easily installed and locked within seconds, preventing staff or cleaners from removing it. Call TMS-Equiparts today!



EQUIPARTS
Repair Parts Specialists®



Product Spotlight



LIQUIDBREAKER

GREEN DRAIN

Eliminate Odors and Pests from Floor Drains!



#86856	2"
#86857	3"
#86905	3-1/2"
#86858	4"

THE PROBLEM

- Sewer odors emitting from floor
- Backflow can occur and cause flood damage
- Floor drain provides doorway for insects
- Current chemical solution is to constantly pour chemicals or water down the drain
- Maintenance is labor intensive and repetitive

THE SOLUTION

- One-way valve eliminates odors
- Strong silicon skirts can prevent flood damage
- Blocks insects from entering through drains
- Chemical free solution that lasts several years

Quick and Easy to Install!

SURE SEAL™

Stop Floor Drain Odors Before They Start with Waterless Trap Protection



Features

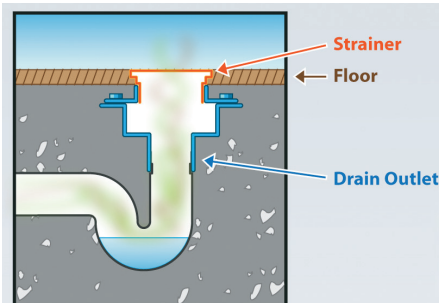
- Fast and Easy to Install
- No Special Tools Required
- Low Maintenance
- No Flow Restriction
- 100% Effective & Safe
- 10-Year Limited Warranty
- Eliminate Call-Backs

Eco-Friendly – Saves Water

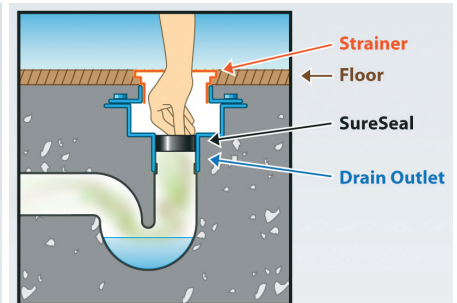
- Reduces use of potable water, lowering water bills.
- Reduces flow of water through sewage treatment systems increasing existing plant capacity.

Say Goodbye to Trap Primers

BEFORE



AFTER



Drain Trap Sealer

#83202 2" Drain - ≥ 12 GPM

#83203 3" Drain - ≥ 34 GPM

#83205 3.5" Drain - ≥ 73 GPM

#83204 4" Drain - ≥ 73 GPM



EQUIPARTS
Repair Parts Specialists



Product Spotlight

E-TRONIC FAUCET

The E-Tronic™ incorporates advanced technology for dependability and convenience. With hermetically sealed, above-deck electronics for easy maintenance and long-term reliability, the E-Tronic™ is a great new option for your commercial lavatory applications. Available in DC version. (AC model available upon request)

CHICAGO FAUCETS.
Geberit Group

#81991

Vandal resistant
.5 GPM spray
outlet

Integral body construction for
easy installation

Efficient dual-beam
infrared sensor with
multiple field adjustable
modes and ranges
(manual teach in)

Single supply for cold or
tempered water

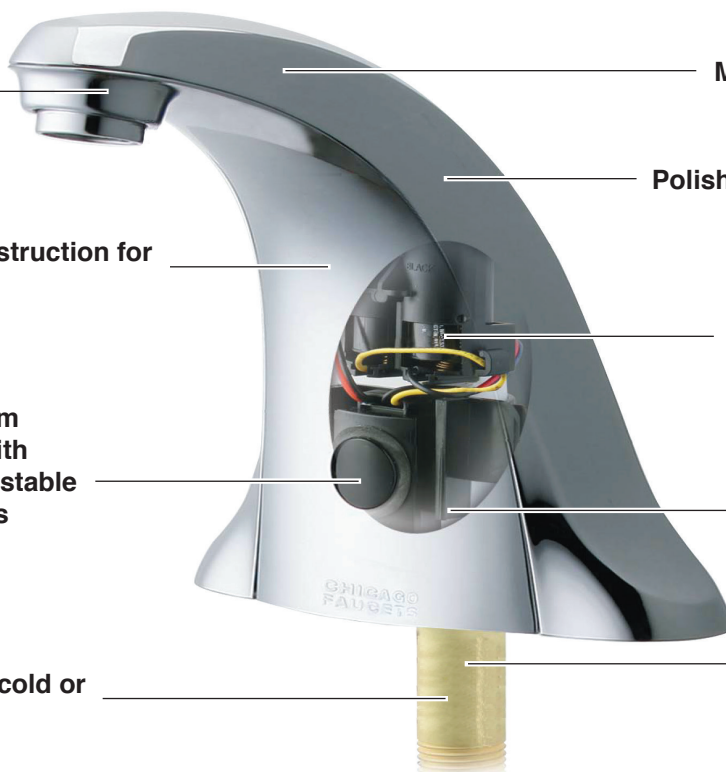
Metal spout construction

Polished chrome plated finish

Above-deck electronics
with choice of CR-P2
battery (shown) or AC
Adaptor

Water-tight solenoid
with filter screen

1/2" NPSM brass
shank with filter
screen



SENSOR ACTIVATED FAUCET WITH INTEGRATED SIDE MIXER

For More Hygienic Restrooms

Hands-free faucets are now the standard in public facilities. The above deck electronics and battery operation of this faucet provide a simple solution for any washroom.

Flexible Water Control

- Pre-mixed and tempered for single water line
- Integral Spout Mixer for hot and cold water lines
- IR Click technology for user directed modes like "temporary off" and continuous run is standard on all models.

Heavy Duty Construction

- Durable, chrome-plated die cast metal construction
- Double infrared sensors and microprocessors

Effortless Installation and Maintenance

- Above deck sensors, microprocessor and battery
- Flexible mounting hardware options



SLOAN

#86899 (EAF-350)

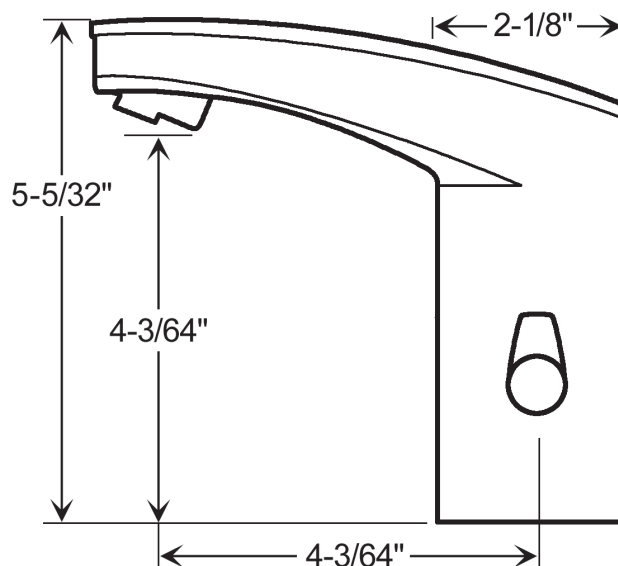
1.5 GPM

TRIM PLATES



#54676
4" Trim Plate

#52154
8" Trim Plate



QUASAR VERSAFILLER RETROFIT KIT WITH UVC-LED WATER TREATMENT

Uses UV Rays to Eliminate Pathogens in Water!

#47447 (PWEBQ)
NON-FILTERED

#47448 (PWF2EBQ)
FILTERED



QUASAR™



- Retrofits PG8AC or P8AM fountains
- UVC-LEDs disinfect the water when it is being dispensed reducing 99.99% of pathogens, including Legionella, Cryptosporidium, and Giardia
- Chemical Free: Provides physical treatment of water without the use of harmful chemicals or altering taste
- Extremely Low Power: UVC-LEDs do not transfer heat to the treated water
- Constant Protection: UVC-LEDs pulse on every 10 minutes to keep the dispense point sanitized
- Fail Safe: Prevents water from dispensing if the QUASAR unit becomes disconnected or fails
- Long Life: UVC-LEDs will last ten years or more
- Mercury Free

COOLER TO BOTTLE FILLER CONVERSION KIT

Upgrade Your Water Cooler to a Touchless Bottle Filler

#48814 (NNEBF EZ)

Converts Elkay EZ & LZ
Series Water Coolers

#48815 (NNEBF PG)

Converts Oasis PG*AC & P*AC Series
Water Coolers (**COMING SOON**)



Don't let drinking fountains go unused because of safety concerns. This new conversion kit from Oasis provides access to chilled drinking water in a hygienic, touch-free way. It replaces the bubbler and top of your existing water cooler with a contactless bottle filler that will keep your customers, employees, or students happy and healthy.

This conversion kit is easy to install. No need to remove your original unit from the wall! It utilizes the existing refrigeration, plumbing, and power source. It easily converts Elkay EZ & LZ series water coolers in minutes. And coming soon, it will also convert Oasis PG*AC & P*AC series water coolers as well.

Features:

- Retrofits to existing Elkay EZ & LZ series water coolers
- Easily converts in minutes
- Touchless, sensor activation
- Re-uses existing refrigeration, plumbing, and power source
- Access through the side of the bottle filler allows for easy replacement of filters
- Heavy duty galvanized steel frame
- Waterways are lead-free in materials and construction
- Built-in monitor and bottle counter
- Retains ADA compliance





EQUIPARTS
Repair Parts Specialists



Product Spotlight

ANTIMICROBIAL HAND SHOWERS

with Self Cleaning Head



#40310044

Antimicrobial Hand Shower Head

A better product than the #05800, for less \$\$\$!!!



#40310045

**Antimicrobial Push Button
Hand Shower Head**

A better product than the #05801, for less \$\$\$!!!

ABOUT SANIGUARD

SANIGUARD is a PERMANENT treatment that helps stop the growth of most bacteria, mold, and some viruses. Unlike disinfectants that dissipate almost instantly, SANIGUARD is actually built-in to the parts you touch most, and will last for the life of the product.



EQUIPARTS
Repair Parts Specialists

EQUIFLEX

STRETCHABLE SHOWER HOSE!



#56570
59" to 78"

#56575
78" to 110"

- Ideal for hospitals and nursing homes
- Safely bathe children
- Conveniently wash pets
- Easily rinse bath and shower walls
- Stainless steel double interlock
- Chrome plated brass bell connector and chrome plated brass nut



IT STRETCHES !



Pittsburgh: 412-781-9100 • Toll Free: 800-442-6622 • Fax: 412-781-3085
www.equiparts.com • www.sloanrepair.com

oxygenics® shower heads



Delivers Power AND Efficiency!

These amazing shower heads from Oxygenics bring you great water pressure while saving water at the same time. You've never seen anything like this! A must try!



Pressure Chamber

Water is introduced into a pressure chamber that works like a mini-turbine jet, increasing water velocity.



Air Vacuum

Water passes through an air vacuum at high speed, infusing oxygen into each drop.



Spray

The pressurized combination of water and oxygen is released through an expanding nozzle, widening coverage and greatly increasing water power.

The Oxygenics Engine

It's what drives these shower heads. Originally developed in 1981, it has been perfected over three decades to make the most of available water resources and give you a powerful, water saving shower experience at any pressure.





The Benefits of Oxygenated Water

Supercharging Water

with oxygen gets the absolute most out of each drop, making the most efficient use of available resources.

Adding Oxygen

to water is like filling up a balloon with air. It makes the water droplets expand so they come out of the shower heads larger and wider, covering more of you when you shower.

The Mixture

of oxygen and water that occurs in an Oxygenics shower head creates an effect like a jet engine, blasting away dirt and odor with incredible strength.

SKIN CARE ADJUSTABLE SHOWER HEAD 2.0 GPM

#87017



Great for:

- Hospitals
- Schools
- Multi-Family Housing
- Locker Rooms

POWER MASSAGE HAND SHOWER - 1.75 GPM FIVE SETTINGS

#87143



Great for:

- Hospitals
- Nursing Homes
- Retro-Fit Replacement

POWER SPA SHOWER HEAD - 2.5 GPM THREE SETTINGS

#87120



Great for:

- Hotels
- Clubs
- Retro-Fit Replacement
- Upscale or Upgrading

POWER SELECT SHOWER HEAD - 2.5 GPM SEVEN SETTINGS

#87122



Great for:

- High End
- Upscale

PBGONE URIC ACID ERADICATOR

#60800016

32 oz. bottle



PBGone eliminates odors caused by Uric Acid! Engineered bacteria create an army of enzymes to attack and eliminate uric acid molecules in minutes, leaving behind a clean, fresh smell.

Use around:

- **Toilets**
- **Urinals**
- **Grease Traps**
- **Septic Systems**
- **Concrete**
- **Waste Water**

Before applying to soiled area, remove as much solid waste material as possible. Then spray directly on soiled surface, as well as surrounding areas such as toilets, urinals, and carpets. Remove any remaining stains by wiping. Leave PBGone on surface and allow to dry. Natural bacteria and enzymes will continue to work to remove odors and soils. PBGone can also be diluted with water to mop up floor areas.

URINAL SCALE REMOVER

Keeps Urinals Flowing Smoothly!

#60800115

(32oz. Bottle - 12 Per Case)

The Urinal Scale Remover from TMS is the ultimate product for removing lime scale, calcium and other corrosive build-ups in your urinals, drains, and even wash basins. Unlike other products, there is no need to remove the urinal in order to clear it. Saves you time and money.

Features:

- ✦ **Ultimate Cleaner:** Removes lime scale, calcium, uric acid and rust build-up in urinals, drains, and wash basins. Eliminates build-up to keep pipes running fast.
- ✦ **No Odor:** Does not give off a toxic odor that is harmful to the user.
- ✦ **Pipe-Safe:** Does not harm drain pipes.
- ✦ **No Removal Necessary:** Designed to clean drains and remove build-up without the removal of the urinal itself.





EQUIPARTS
Repair Parts Specialists



Product Spotlight



TRAP SEAL

#79690

- Prevents sewer gases and odors from entering through the trap.
- Provides a sanitary septic seal
- Concentrated & ready to use
- no dilution necessary

USE FOR:

- Floor & Shower Drains
- Sinks
- Toilets
- Urinals
- Water Fountains
- Condensate Drains
- Any Unprimed or Unused Drain

USE IN:

- Empty or vacant buildings
- Schools
- Hospitals
- Stadiums
- Factories
- Marine Applications

"WIPE OFF" VANDALISM MARK REMOVER

Great for Toilet Partitions and Lockers!



#79643 16.5 oz.

Removes Most:

- Spray Paint
- Ball Point Inks
- Marker Inks
- Stencil Inks
- Mimeo Inks
- Printer's Inks
- Lipsticks
- Crayons
- Fingerprints
- Pencil Marks
- Scuff Marks
- Tape Residue
- Maw Buildup
- Road Tar

SaniGuard® Fogger

SaniGuard® Dry on Contact Sanitizing Surface Spray



No waiting, no wiping, no germs! The SaniGuard® Total Release Fogger is the world's first and only dry on contact spray sanitizer and deodorizer. It has the same kill on contact power of the conventional SaniGuard® sprays.

SaniGuard® effectively kills 99.99% of the top 39 germs, bacteria, viruses & fungus in mere seconds. Safe on any surface including fabrics & electronics, making it great for use in restrooms, hospitals, offices, and transportation vehicles. It does not leave any residue behind. Get rid of disease causing microbes almost instantly with this easy-to-use Saniguard Fogger.

#60350001

3 oz. can

Treats up to 125 sq. ft.
(12 x 12 x 8 ft.)

#60350001CS

Case of 12

#60350002

8 oz. can

Treats up to 625 sq. ft.
(25 x 25 x 8 ft.)

#60350002CS

Case of 12

Use to Disinfect:

- *Restroom and Locker Rooms*
- *Reception Areas*
- *Correctional Facilities*
- *School Classrooms*
- *Work Stations & Offices*
- *Hospitals & Nursing Homes*
- *Workout Areas & Equipment*
- *Cafeterias*
- *Holding & Jail Cells*
- *Transportation Vehicles & Buses*



BLUE MONSTER® PRODUCTS

BLUE MONSTER® COMPRESSION SEAL TAPE

***Stops Nasty Leaks Under Pressure
Without Turning Off The Water!***



#36887
1" x 12 ft.

- Seals leaks up to 150 PSI (water, air, steam)
- Self-fusing layers for a waterproof, long-term compression seal
- Effective to 500°F / 260°C
- Suitable for burial without jacketing
- Environmentally safe and non-toxic
- Stops and prevents corrosion
- Safe for drinking water



#36888
2" x 12 ft.

- All purpose - use on iron, brass, copper, aluminum, stainless steel, galvanized steel, polyethylene, polypropylene, PVC, CPVC, ABS, and more
- Ideal for irrigation pipe repair
- Easy to use - no waste

BLUE MONSTER® PTFE THREAD SEAL TAPE

A new, thicker, professional grade density!



#86567
1/2" x 1429"

- Monstrous roll - 1429" !
- All purpose! use on iron, brass, copper, aluminum, stainless steel, galvanized steel, polyethylene, polypropylene, PVC, CPVC, ABS, fiberglass, and more!
- No need for pipe dope
- Easier to use - no waste!



#89041
3/4" x 1429"

- Will not harden or crack on the joints
- Acts as a thread lubricant and anti-seize
- Prevents electrolytic corrosion of threads
- No curing time
- Unlimited shelf life
- Non-flammable and non-toxic

BLUE MONSTER® ANTI-SEIZE LUBRICANT

For Use On All Steel Pipe and Brass Fittings



#79784
Nickel

For use on stainless steel pipe and fittings.

This anti-seize lubricant and thread sealant is for use in a high temperature environment. It is a nickel and graphite-based compound composed of pure nickel powder and graphite flake dispersed in a petroleum carrier. Mill-Rose Blue Monster Nickel Anti-Seize will not contaminate catalyst beds, reaction chambers, or special alloy fittings. It provides resistance to chemical corrosion and oxidation at temperatures up to 2600°F (1427°C).



#79785
Copper

For use on stainless steel, nickel, copper, cast iron, brass, titanium, non-metallic gasket materials, and plastic.

This specially formulated copper-based thread sealant is for high temperature use up to 1800°F (982°C) and for high pressure environments. It contains special ingredients that produce a permanent leak-proof metallic seal under pressure, and prevents seizing, galling, and corrosion under extreme conditions.

EXTREME SAFETY TAPE

Superior Traction Helps Prevent Slips and Falls!



Specially designed for the harshest environments. Works in extreme temps from 220° F to -40° F. Tolerates steam cleaning, detergent cleaning, and low PSI pressure washing. Essentially unaffected by oil, grease, saltwater, mild acid, and alkali exposure under normal conditions. Adhesive bond is three times stronger than other anti-slip tapes. Multi-layer grit embedding process lengthens product life. Easy to cut for custom sizes.

Black Extreme Tapes



#14533YBLK

4" x 12" Strips

#14534BLK

3" x 24" Strips

#14535BLK

6" x 24" Strips

#14536BLK

6" x 36" Strips

Yellow Extreme Tapes



#14533YEL

4" x 12" Strips

#14534YEL

3" x 24" Strips

#14535YEL

6" x 24" Strips

#14536YEL

6" x 36" Strips

Recommended For:

- Offshore Marine Applications
- Oil and Gas Rigs
- Heavy Traffic Areas
- Loading Docks
- Stairways
- Ramps
- Walkways
- Bleachers
- Heavy Equipment

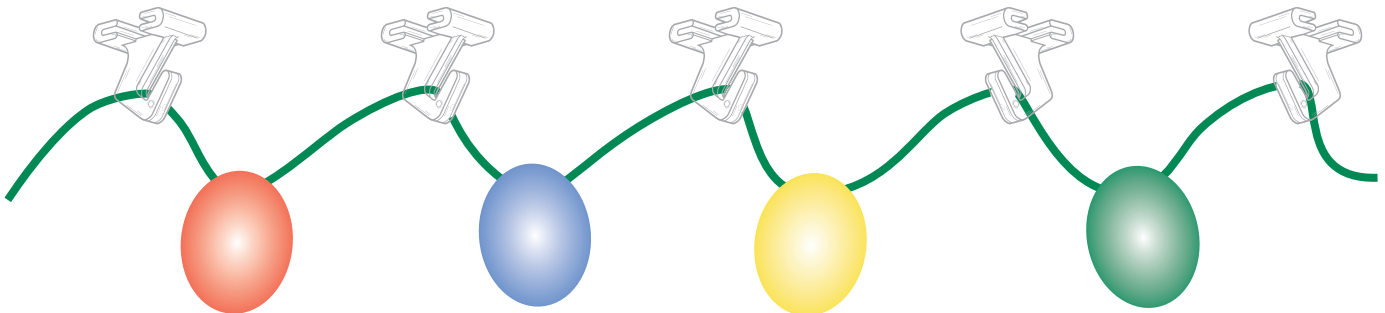
TRACK HANGER HOOK

***Perfect For Hanging Holiday Lights,
Planters, and Decorations!***

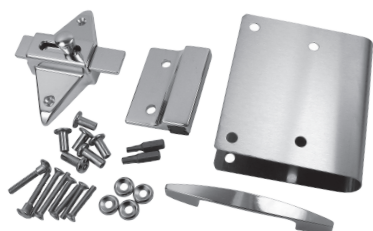


#11141

These clever hooks are easy to install and neatly attach to ceiling tile track for temporary or permanent use. And because they are made of clear plastic, the track hanger hook is practically invisible. No more unsightly thumbtacks or nails!



EQUIPRO PARTITION DOOR FIX-IT KITS



#16135

OUTSWING DOOR LATCH FIX-IT KIT W/PULL

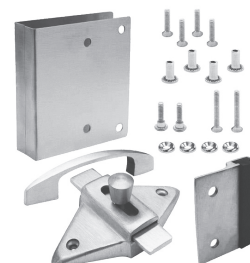
For 1" Metal Rounded Doors
For Stainless Steel use #16135SS



#16150

OUTSWING DOOR LATCH FIX-IT KIT W/PULL

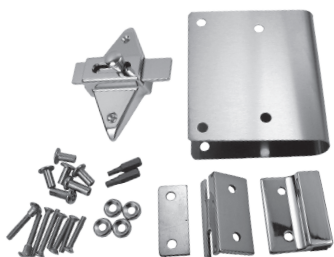
For 1" Square Edge Doors



#16836

FIX-IT KIT FOR SQUARE EDGE DOOR W/PULL

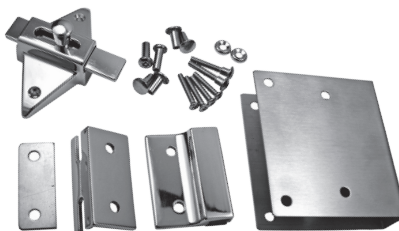
For 3/4" Square Edge Doors



#16136

INSWING DOOR LATCH FIX-IT KIT

For 1" Metal Rounded Doors
For Stainless Steel use #16136SS



#16148

INSWING DOOR LATCH FIX-IT KIT

For 1" Square Edge Doors

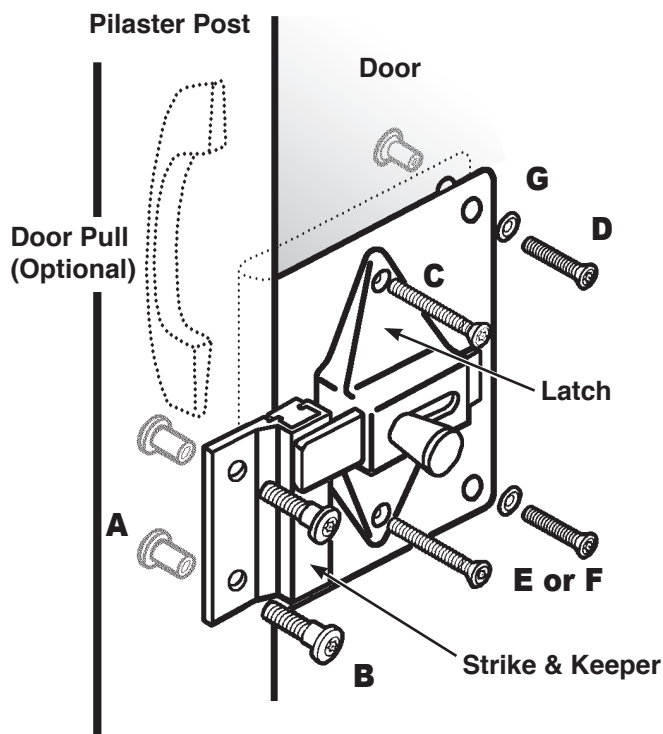


#16151

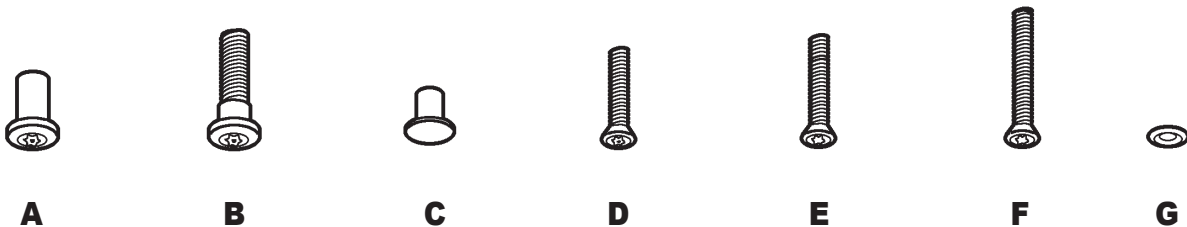
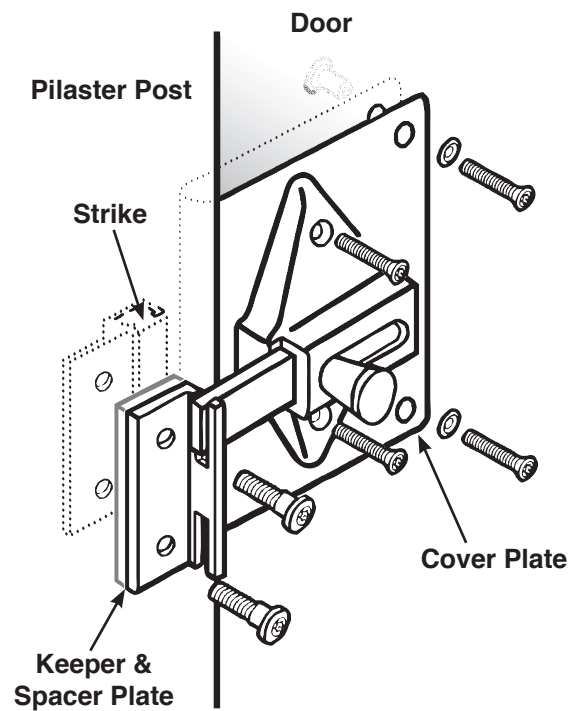
S.S. BUMPER HOOK & PLATE FIX-IT KIT

ASSEMBLY DIAGRAMS FOR PARTITION DOOR FIX-IT KITS

FOR OUTSWING DOOR KIT



FOR INSWING DOOR KIT



Pittsburgh: 412-781-9100 • Toll Free: 800-442-6622 • Fax: 412-781-3085
www.equiparts.com • www.equipartsdrinkingfountains.com

CONTINUOUS HINGE FOR TOILET PARTITION - 54"



Bright Aluminum Finish !

#15647 LH #15646 RH

- Distributes the weight along the full length of the door.
- Heavy duty, for the most severe applications.
- Excellent for regular doors or oversized handicap doors.
- Self-closing. Five heavy duty springs on each hinge.
- Emergency access (hinge can lift 1.5")
- 1/4" thick heavy duty stainless steel pin



EQUIPARTS
Repair Parts Specialists



Product Spotlight

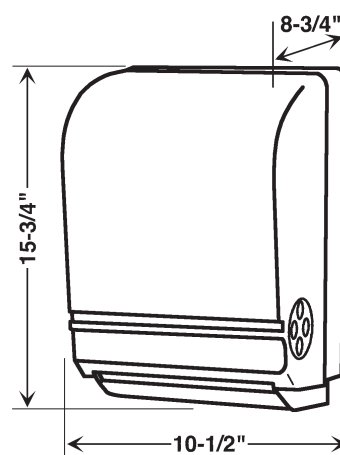
HANDS-FREE ROLL TOWEL DISPENSER

Distinctive, Compact, Quiet, Economical

#15678



***Universal For
Most 8" Rolls !***



- Dispenses most non-perforated roll towels up to 8" in diameter and 8" wide.
- Autocut mechanism provides user with an 11" sheet.
- Emergency paper feed.
- Transfer system allows complete usage of stub rolls up to 2-3/4" diameter.
- 20 gauge steel back with transparent cover.
- Heavy duty lock with standard metal key.
- Requires 4 "D" batteries to operate.

BLOCK-AIDE

Out of Service Sign and Lock For Partition Stalls



#16764



Size: 5/8"H x 3"W x 1-1/2"D

This clever item slides down between the pilaster and partition door to lock patrons out of a stall that is out of order. It's much more professional looking than a makeshift cardboard sign or a trash bag. Not only does Block-Aide provide a prominent alert that the stall is not usable, it also prevents patrons from entering the stall and seeing the broken fixture, leaving them with a bad impression of your establishment. Block-Aide fits most

partition doors, is reusable, and is also chip and crack resistant. It's a very effective, sanitary, and more attractive method of notifying customers of a maintenance issue. Give Equiparts a call and order Block-Aide *before* you need it!

Locks Users Out • Reusable • Professional Impression • Eye-Catching Alert



EQUIPARTS
Repair Parts Specialists



Product Spotlight

STEP-N-WASH

#16760

*Parents Will Love This Safe and Easy Way
For Their Children to Access the Sink!*



- Bolts directly to the restroom floor
- A parent or child uses their foot to pull the step into a horizontal position
- Automatically retracts after use
- Approved by risk management from Fortune 500 companies
- Designed with no pinch points
- Made of Type 304 stainless steel
- 800 lb. capacity
- 5 year warranty



a big step for little feet™

Shopping with kids can be a major hassle. Lifting and holding them at the restroom sink while trying to keep an eye on other children or bags just adds to an already stressful situation. With the **Step-n-Wash**, parents never have to lift their children to wash again. It is a very safe and cost effective way to eliminate the struggle of lifting a 30 or 40 pound child to reach the lavatory. **Step-n-Wash** is utilized more often than diaper changing tables. Don't fall behind your competitors who are already using the Step-n-Wash. Call Equiparts today! Your customers will thank you.



DIAPER DECK



***Safe, Compact,
and Durable!***

**#16671
Diaper Deck**

**#16672
Replacement Gas Spring**

**#16673
Replacement Strap with
Tamperproof Screws**

- **Safe**

The curved bed allows the baby to only roll toward the wall or the parent. The bed drops horizontally instead of vertically, preventing infant from rolling off the sides. The bed on the Diaper Deck™ will not drop below the 90 degree angle required for safety. All surfaces have soft rounded corners for safety as well as ease of cleaning. The Diaper Deck™ features Safe Strap™, a uniquely designed safety restraint with a clip lock fastener that only the parent can release.

- **Space-Saving Design**

The Diaper Deck™ projects only 4½ inches from the wall when closed, and only 18½ inches when opened. This unique design allows customers to pass the changing parent while in use, and even allows the option of installation inside a restroom stall for maximum privacy.

- **Durable, Long-Lasting Construction:**

The Diaper Deck™ is constructed of high density polyethylene plastic, and is designed to withstand up to 400 lbs. of static weight. It is impervious to odors, mold, mildew, and is easily cleaned. A pneumatic air pump is used for controlled lowering and retraction of the bed. It is vandal resistant, and provides a greater sense of safety for parents, providers and facility managers. And the choice of stone/light grey colors allows for installation in a room of any style or decor.

TOILET SUPPORTS

#81550

"BIG JOHN" TOILET SUPPORT

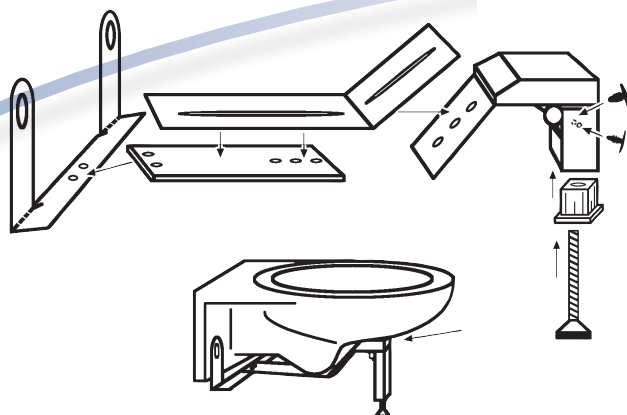


**Height Adjustment
From 7.5" To 14"**

- Increases The Weight Capacity From 350 Lbs to Over 1000 Lbs.
- Simple to install on existing toilets.
- Specially engineered leg base can be raised up to 4" for cleaning access
- Leg made of high impact ABS.
- Perfect for hospitals, nursing homes, government facilities, stadiums, airports, theatres, office buildings, and virtually every wall mounted toilet.

#56477

FITS-MOST WALL MOUNTED TOILET SUPPORT



- Supports users up to 1000 lbs
- Compatible with most wall mounted toilet models
- Installs in less than 15 minutes
- Allows sanitation of floor underneath for infection control