

Welcome Spring Sale!

EQUIPARTS
Repair Parts Specialists

Sale Ends June 12, 2026



CONTENTS

Chemicals & Cleaning	16	McGuire Stop Valves.....	11
Door Locks.....	20	Milwaukee Tools.....	8
Drain Cleaners	13	Pipe Cutters.....	7
Fittings.....	10	Plumbing Tools.....	5
Garden Hose	4	Ridgid Tools.....	6
HVAC Maintenance	14-15	Satco Lighting	18
Hydrant Repair	2-3	Sloan Repair & Shower	12
Klein Tools.....	9	T&S Repair Parts	19



Hydrant Repair Kits

JOSAM REPAIR KITS



#51883

Hydrasan Non-Freeze

\$64.80 ea

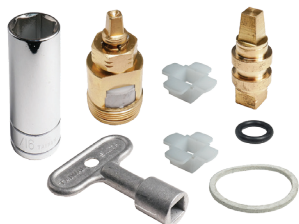


#81688

For 1400N-1410
Old Style Unit

\$88.79 ea

SMITH REPAIR KITS



#52506

New Style
Replacement for 5509QT,
5560QT, and 5609QT

\$88.40 ea



#56942

New Style
Vacuum Breaker Repair Kit

\$75.60 ea



#81287

For use on 5517, 5519,
and 5619 hydrants

\$66.75 ea



#82085

Ceramic stem for
new style hydrants

\$56.50 ea

WOODFORD REPAIR KITS



#SP4403

Repair kit for models
60, 65, and 67

\$71.95 ea



#59653

Repair kit for model 70

\$79.40 ea



#80747

Vacuum Breaker Kit
for Series 17

\$3.95 ea

ZURN REPAIR KITS



#50910

Replacement for
Z-1300RK, Z-1310RK

\$89.60 ea



#45549

Use on 1321, 1330,
and 1333 units

\$106.85 ea



#57670

Replacement for
Z-1305RK, Z-1315RK,
and Z-1325RK (Use 2)

\$75.30 ea

Hydrant Repair

LEAD-FREE NON-FREEZING WALL HYDRANT



#42430	6"	\$338.94 ea
#42431	8"	\$338.94 ea
#42432	10"	\$338.94 ea
#42433	12"	\$379.41ea
#42434	14"	\$379.41 ea
#42435	16"	\$379.41 ea

Zurn's Ceramic Disc technology provides convenient half-turn functionality with long-lasting durability, offering low-maintenance and proven performance.

- Self-draining, non-freeze, anti-siphon wall hydrant with vandal-resistant integral vacuum breaker
- Chrome-plated rough cast bronze housing with locking hinged cover stamped "WATER"
- Lead-free
- Bronze and stainless steel interior components
- Non-turning operating rod with free-floating compression closure valve
- Combination 3/4" female solder and 3/4" male pipe thread inlet connection, and 3/4" male hose connection
- Includes operating key
- Enclosed for greater protection
- Recommended for light commercial applications such as office buildings, apartment complexes, mall and shopping centers, schools, churches, and industrial buildings

1/4 TURN BALL VALVE HOSE BIBB



#50128B
1/2" MIPS or 1/2" Solder Inlet
\$12.50 ea

1/4 TURN BALL VALVE HOSE BIBB



#612359
1/2" MIPS or 1/2" Solder Inlet
\$14.95 ea

FOUR WAY KEY FITS ZURN



#03029Z **\$16.09 ea**

- Fits 1/4", 9/32", 5/16", and 3/8"
- Fits stopcocks, sillcocks, & valves

FOUR WAY KEY



#03029 **\$12.90 ea**

- Fits 1/4", 9/32", 5/16", and 11/32"
- Fits stopcocks, sillcocks, & valves

HYDRANT KEY



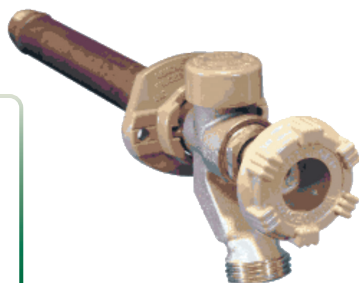
#54267 **\$9.95 ea**

Fits 9/32" square, 3-1/4" long
Also fits sillcocks



WOODFORD FREEZELESS ANTI-SIPHON WALL FAUCET WITH 3/4" HOSE THREAD OUTLET

This faucet will not rupture from freezing when the valve is shut off and the hose is removed. Contains an integral backflow protection device which protects up to 125 psi of back pressure, and therefore does not require an add-on vacuum breaker.



#81134	8"	\$58.67 ea
#50630	10"	\$61.71 ea
#65384	12"	\$64.66 ea
#50632	14"	\$67.78 ea
#46751	16"	\$70.80 ea
#57591	18"	\$85.64 ea
#56931	24"	\$113.41 ea

*INLET: Combination
1/2" Sweat and
1/2" Male IPS*

CHROME HOSE BIBB LOCKOUT



#58082
\$18.90 ea

- Eliminates unauthorized water usage
- Substantial savings of ever increasing water bills
- Adapts to garden hose bibbs and hose connection vacuum breakers
- Installs and removes in seconds
- Provides public protection from grey water

Garden Hose

DOUBLE HOSE "Y" WITH SHUT OFF



#52866 **\$14.73 ea**

All brass construction. Operates two hoses from one faucet. Positive, leak-proof, independent shut-offs.

ALL BRASS LARGE BORE HOSE SHUT-OFF WITH SWIVEL CONNECTION



#52869 **\$24.50 ea**

A Must-Buy with Our Hose Nozzle!

DOUBLE MALE HOSE NIPPLE

Solid Rod Brass. Precision Machine Threads.

MALE X MALE



#28300 Hose x 1/2" MIPS **\$4.40 ea**

#28301 Hose x 3/4" MIPS **\$7.21 ea**

#28320 3/4" Hose x Hose with 1/2" FPT **\$5.15 ea**

HOSE END CAPS



#28306
Brass 3/4"
Includes Washer **\$1.95 ea**

GARDEN HOSE WASHERS



#28308
Cloth Inserted Rubber **38¢ ea**

#28309
With Tabs **24¢ ea**

PREMIUM HOSE REPAIR COUPLING

Fits 5/8" & 3/4"



#28351
Complete Set **\$14.48 ea**

Simply slide the coupling onto the hose and tighten the clamp with a standard screwdriver. For all sizes of rubber and plastic hose. Rustproof, leak resistant, and long lasting.

AQUA-GUN NOZZLE



#03140 **\$9.85 ea**

Insulated heavy duty nozzle with threaded front for attaching water accessories. Locking clip holds continuous spray of any pattern. Solid brass stem and adjustment knob.

FRONT TRIGGER PISTOL GRIP NOZZLE



#52871 **\$13.70 ea**

Durable die-cast metal body. Solid brass memory spray pattern control. Flow control dial. Easy front trigger grip. Insulated grip for cold water comfort. Self-closing, spring-action flow lever provides positive shut-off. Lock-on water clip.

WORLD'S GREATEST HOSE NOZZLE



#28338 **\$12.95 ea**

Solid, All Brass Construction

BRASS NOZZLE



#28340 **\$11.70 ea**

The industry standard! Heavy, solid rod brass for rugged, reliable performance designed to last a lifetime. Rustproof & leak resistant. Self rising stem and positive shut off. Fully adjustable from fine mist to full stream.

GARDEN HOSE



#28328
3/4" x 50' **\$59.60 ea**

Professional Commercial Hose constructed of double-reinforced rubber-and-vinyl to resist kinks, abrasion and the toughest conditions. Solid brass couplings. 500 PSI burst rating. Made in the USA.

Plumbing Tools

ONA PULLER

*The Premiere Way To Remove Moen Cartridges!
Crank it, Don't Yank it!*



#39410

\$69.92 ea



Scan This Code
to Watch a
Demo Video!

Easily removes **1200** and **1225** push-pull cartridges. Also great for removing sleeves that get stuck in the valve body. The tool to remove **1222** cartridges is included as well.

INTERNAL SPUD WRENCH



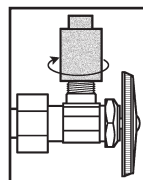
#03118HD **\$28.24 ea**

For removal or insertion of closet spuds, sink strainers, P.O. plugs, waste and overflows, etc.

Hardened steel, cadmium plated.
Capacity: 1" - 4"

Extra Heavy Duty

COMPRESSION ANGLE STOP INSTALLATION WRENCH



#35342 **\$20.83 ea**

*Remove outlet nut
and screw on wrench.*

- Fits 1/2" MPT or 3/8" compression threads
- Protects special finishes
- Quick and easy alignment of stop valve

FULL ONA PULLER KIT FOR BROKEN POSI-TEMP CARTRIDGES



#40243KIT **\$56.27 ea**

This kit is used for removing **broken** 1222 Posi-Temp cartridges ONLY. Includes all necessary parts.

ONA PULLER ADD-ON FOR DELTA CARTRIDGES



#85082 **\$42.46 ea**

Use to extract Delta Multi-Choice 13/14 series cartridges

Must use with Ona Puller #39410

"SMART" DUMBBELL REMOVER

Installs and Removes Tub Drains and Closet Spuds



#03131

\$12.50 ea

- Fits 1-1/2" and 2" closet spuds
- 6" long
- Fits tub drains with or without cross bars
- Prevents scratching of decorative finishes

14-in-1 CLOSET SEAT NUT WRENCH



#03039 **\$35.07 ea**

Tighten or loosen nuts without the danger of fracturing non-metallic nuts. Both ends of the tool are adapted for use with a leverage pin.

SEAT & SPRING REMOVAL & INSTALLATION TOOL

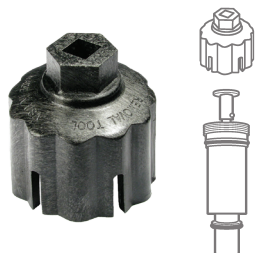


#38197

\$19.95 ea

Quickly removes seats and springs from Delta, Peerless, Valley, Aqua-Line, and other single-lever fixtures in seconds.

CARTRIDGE EXTRACTOR FOR FLUSHMATE



A Must-Have Tool for Pressure Assist Flushmate Units!

#82701 **\$17.31 ea**

Used to remove
#08287 Flushmate Cartridge

SYMMONS REMOVAL TOOL

For Seats, Stops, & Diverters



#80006

\$29.80 ea

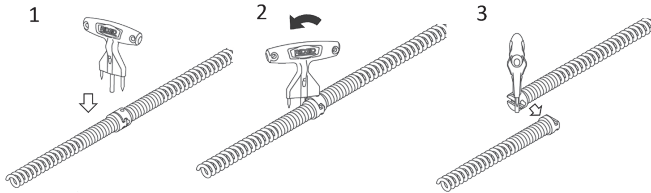
TRIDENT CABLE DECOUPLER



#38969 **\$52.30 ea**

- Faster cable separation than traditional pin key
- Easily identifiable
- Aluminum provides great strength to weight ratio
- Accommodates 5/8", 7/8", and 1-1/4" sectional cables

Disconnecting Using Trident Decoupler



1. Fully insert decoupler (tapered end) to depress the plunger pin.
2. Rotate decoupler to contact other coupling.
3. Continue rotating decoupler to slide couplings apart.

SNAKE COUPLING KEYPINS



For 3/8" and 5/8" Cable

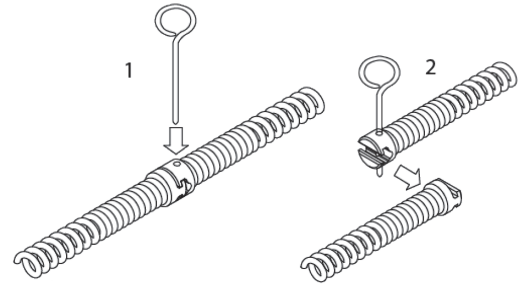
#35850 **\$8.09 ea**

For 1/2" Cable

#35458 **\$8.24 ea**



Disconnecting Using Pin Key

1. Fully insert pin key (rotate if needed) to depress the plunger pin
2. Slide coupler apart







For Sectional Machines

RIDGID CABLES

	PART#	MODEL	LENGTH	SIZE/TYPE	TYPICAL APPLICATION	CHARACTERISTICS	MACHINES	PRICE
	#34889	C-7	7-1/2'	5/8"	2" and 3" floor drains.	Tight wind cable providing good rigidity in a hollow core cable. Not for tree roots.	K-50, K-60SP	\$70.27 ea
	#34475	C-8	7-1/2'	5/8"	Drain lines 1-1/4" to 2". Ideal for proper cleaning of small lines.	Open wind cable that is more flexible than C-7. Open wind acts as an auger to thoroughly remove blockage in small lines.	K-50, K-60SP	\$52.68 ea

For Drain Guns, Sink Drums And Small Line Sectional Machines * I.C. "Inner Core" Flexible Cable

	PART#	MODEL	LENGTH	SIZE/TYPE	TYPICAL APPLICATION	CHARACTERISTICS	MACHINES	PRICE
	#35071	C-2	25'	5/16" Drop Head	Drain lines 3/4" to 1-1/2". Drop head leads into down drain pipes, especially good for back-to-back mounted fixtures and severe bends.	Hollow core cables that provide flexibility for severe bends and "P"-traps.	K-25/K-26 (25' only) K-39 K-40 K-50*	\$106.30 ea
	#36142	C-11	15'	1-1/4"	Drain lines 3" to 8". Good for all around work. Easily negotiates 4" traps.	Standard all-purpose open wind with 3/8" pitch. Flexible, yet rigid enough to do fast, tough root cutting.	K-1500A/B/ & SP	\$189.18 ea
	#36138	C-23ic	35'	5/16" Inner Core w/ Drop Head	Drain lines 1-1/4" to 2". Drop head leads into down drain pipes, especially good for back-to-back mounted fixtures and severe bends.	Inner core cables that provide good flexibility while delivering more cleaning power to cable end. Resists kinking.	K-25/K-26 (25' only) K-39 K-40 K-3800 K-50*	\$147.18 ea
	#35069	C-5	35'	3/8" w/ Bulb Auger	Drain lines 1-1/4" to 2-1/2" kitchen sinks, lavatory sinks, slop sinks and laundry lines.	Flexible cables most commonly used after traps have been removed. Resists kinking.	K-39 K-40 K-50*	\$134.38 ea

Pipe Cutters

RIDGID

WHEELER REX

RATCHET CUTTERS

Easily Cut Through Hard Plastic Material



#35987
Capacity: 1/2" - 2-3/8"

\$215.69 ea

- Durable aluminum construction for heavy duty use
- Ergonomic grips on bottom handle are spaced at 1/2" increments to act as a quick pipe measuring scale
- X-CEL® quick-change blade
- Burrless cutting operation provides a square cut
- Intended materials: Plastic (PVC, CPVC, PP, PEX, PE, rubber hose) and multilayer tubing

QUICK ACTING TUBING CUTTER



#34253
1/4" to 1-5/8" OD

\$79.71 ea

#35407
1/4" to 2-5/8" OD
\$122.27 ea

#35408
1-1/4" to 3-1/2" OD
\$164.05 ea

TUBING CUTTER



#34668
1/8" thru 1-1/8" OD

\$47.22 ea

Features an enclosed feed screw to eliminate clogging and jamming, grooved rollers for close to flare cuts, and a fold away reamer. Spare cutter wheel in the handle. Cuts copper, brass, & aluminum tubing, and thin wall conduit.

TUBING CUTTER REPLACEMENT WHEELS



#34586
\$10.84 ea
For Cutting
Aluminum and Copper

*Fits cutter models No. 101, 103, 104, 118,
150, 151, 152, 153, 205, and all the cutters above*

ECONOMY RATCHET CUTTER



#37861 **\$18.89 ea**

One-handed ratchet action cuts 1/8" to 1-5/8" schedule 40 pipe, including PVC, ABS, vinyl, poly pipe, and tubing. Rugged, anti-rust construction with a heat treated blade.

CLOSE QUARTERS TUBING CUTTER



#36889 **\$214.40 ea**

Designed for cutting in small, tight spaces. Cuts 1/4" to 2-3/8" plastic and non-ferrous materials with the same cutter wheel.

REPLACEMENT CUTTING WHEEL



For Above #36889 Cutter

#37849 **\$17.98 ea**

PLASTIC PIPE FITTING SAVER



#41958 **\$273.34 ea**

Quickly and easily removes pipe from solvent welded fittings. Fits 3/8" drill chuck. Saves time and money over replacing whole assemblies.

INCLUDES:

- 1/2" IPS Fitting Saver
- 3/4" IPS Fitting Saver
- 1" IPS Fitting Saver

PIPE HOG REAMER KIT FOR SCHEDULE 40 PIPE



#38107 **\$450.92 ea**

Quickly and accurately bores out solvent welded fittings to make repairs. Fits 1/2" drill chuck. Saves time and material. Pays for itself in one use.

INCLUDES:

- 1-1/2" Pipe Hog
- 2" Pipe Hog
- 3" Pipe Hog
- 4" Pipe Hog
- Extension shaft
- Carrying case

M12™ STICK TRANSFER PUMP

Push Water Farther With 15ft. Max Head Height



#39507 **\$268.20 ea**

- Eliminate repetitive manual pumping
- Hydropass™ filter shields against clogs
- 3/4" outlet attaches to standard garden hose
- Up to 9 gallons per minute
- Up to 275 gallons on (1) M12™ REDLITHIUM™ XC4.0 Battery
- 36" submersible barrel for easier inlet control
- Battery not included



#SP16212
**M12™ REDLITHIUM™
XC6.0 BATTERY PACK**

\$149.60 ea

REDLITHIUM™ PIVOTING FLASHLIGHT

#40134 **\$82.99 ea**



- 110° pivoting light head
- Magnetic base provides a hands-free task light
- 377 feet spot beam distance
- Includes 2 ft. USB-C cable
- 3X faster charge time
- Fuel gauge allows fast checking of charge
- Built-in pocket clip
- Three light output modes:
Spot high mode: 500 lumens- 2.5 hours
Flood high mode: 400 lumens- 3 hours
Flood low mode: 100 lumens- 10 hours

6 PIECE SHOCKWAVE IMPACT DUTY™ 6" MAGNETIC NUT DRIVER SET

#40439 **\$37.97 ea**



- Magnetic nut driver holds screws securely during application set-up
- IMPACT DUTY™ Magnet prevents magnet loosening over time
- Optimized SHOCK ZONE™ absorbs peak torque and prevents breakage
- Color-coded bands aid with selecting the right size nut driver
- Designed for use with Impact Drivers and Drill Drivers

TINTED SCRATCH RESISTANT FOG-FREE SAFETY GLASSES

#40061 **\$15.97 ea**



- Fog-free for all day comfort
- Comfortable temple arms
- Scratch resistant lens
- Flexible nose bridge

KNEELING PAD



#40446 **\$44.97 ea**

- Pressure reducing foam provides long-lasting comfort
- Thick comfortable padding retains shape
- Durable, tear-resistant base

PENLIGHT

#41957 **\$20.30 ea**



- Protective rubber bite zone for hands-free use
- Includes 2 AAA batteries
- 5.37" long, 0.64" wide
- Output: 100 lumens for 3 hours

M12™ FUEL INSTALLATION DRILL/DRIVER KIT

*Unrivaled Access and Maneuverability
in Hard-to-Reach Places!*

#39853 **\$282.70 ea**



Use your smart phone camera to scan this QR code and watch a short demo video of this driver!

Includes:

- (1) M12 FUEL™ Installation Drill/Driver
- (2) M12™ REDLITHIUM™ CP2.0 Battery
- (1) M12™ Lithium-ion Battery Charger
- (1) Right Angle Attachment
- (1) Offset Attachment
- (1) 3/8" Metal Chuck Attachment
- (1) 1/4" Hex Attachment
- (1) Compartmentalized Contractor Bag
- (1) Belt Clip

INSULATED KLEIN-KURVE® WIRE STRIPPER AND CUTTER

For 10-18 Solid & 12-20 Stranded AWG Wire

#41937 **\$30.40 ea**



- Insulated Wire Stripper/Cutter is individually tested to meet or exceed ASTM F1505-16(2021) and IEC 60900:2018 standards for insulated tools
- Thick multi-layer grip design provides protection against electric shock
- Cuts, strips, and loops both 10-18 solid and 12-20 stranded AWG wire
- Cleanly shears 6-32 and 8-32 screws
- Made in the USA
- Shear-type cutting blades for clean cuts
- Spring-loaded action for self-opening
- DO NOT use to cut steel wire

10-IN-1 FOLDING POCKET SCREWDRIVER/NUT DRIVER

#39198 **\$35.85 ea**



Contains 5/16" and 1/4" nut drivers, #1 and #2 Phillips, 1/4" and 3/16" slotted, T10 and T15 TORX, and #1 and #2 square-recess bits

KLEIN WORK GLOVES WITH TOUCHSCREEN CAPABLE FINGER TIPS



#39893 Large

#39893XL XL

Any Size

\$6.35 pr

Other Sizes Available on Request

- Touchscreen capable fingertips
- Nylon-spandex material
- Tear and abrasion resistant while still maintaining flexibility for great dexterity
- Microfoam nitrile dip coating provides superior grip in all conditions

32-PC. KNURLED HEX BIT SOCKET SET SAE AND METRIC



#41938

\$84.10 ea

- Socket Set contains 5/64" through 3/4" and 2 mm through 19 mm hex bit sockets
- 1/4", 3/8" and 1/2" drive sizes are optimized for the specific application

- Knurling at base of each socket provides greater grip when starting fasteners by hand
- Spring-loaded latch to easily open and close the case with one hand
- Bold stamped size markings for quick & easy size ID
- MODbox™ Case has clear lid for quick and easy tool identification, along with an embedded small parts storage tray for loose fasteners
- Compact, modular storage system is designed to nest neatly within the Klein MODbox™ system

STAND-UP TOOL BAGS - TWO PACK

SUPER CONVENIENT!



#39234

\$15.98 ea

Orange Bag Dimensions
8.5"W x 6.5"H x 1.125"D

Grey Bag Dimensions
8.5"W x 7.5"H x 1.125"D

Klein Tools' Stand-Up Zipper Bags will keep your pieces and parts organized. The gusseting on these bags keeps them standing up, making it easy to find your hex keys, small levels, drill bits, and pieces.

Fittings

CLEARLOG PUSH FITTINGS



- **Transparent durable body lets you see and confirm the connection!**
- No need to mark and measure insertion depths
- Stainless steel body collar
- Compatible with PE-RT, PEX, Copper, and PVC



STRAIGHT COUPLING



- | | | |
|----------|-------------|-----------|
| #58600CL | 1/2" x 1/2" | \$4.39 ea |
| #58601CL | 3/4" x 3/4" | \$6.70 ea |
| #58602CL | 1" x 1" | \$9.96 ea |

REDUCING COUPLING



- | | | |
|----------|-------------|-----------|
| #58609CL | 3/4" x 1/2" | \$5.66 ea |
| #58610CL | 1" x 3/4" | \$8.44 ea |

90° ELBOW



- | | | |
|----------|-------------|------------|
| #58603CL | 1/2" x 1/2" | \$5.10 ea |
| #58604CL | 3/4" x 3/4" | \$8.37 ea |
| #58605CL | 1" x 1" | \$13.43 ea |
| #58606CL | 3/4" x 1/2" | \$6.61 ea |

TEE



- | | | |
|----------|--------------------|------------|
| #58611CL | 1/2" x 1/2" x 1/2" | \$7.37 ea |
| #58612CL | 3/4" x 3/4" x 3/4" | \$11.37 ea |
| #58613CL | 1" x 1" x 1" | \$19.65 ea |

REDUCING TEE

- | | | |
|----------|--------------------|------------|
| #58617CL | 3/4" x 1/2" x 1/2" | \$9.32 ea |
| #58614CL | 3/4" x 3/4" x 1/2" | \$10.83 ea |
| #58616CL | 3/4" x 1/2" x 3/4" | \$10.83 ea |
| #58615CL | 1" x 1" x 3/4" | \$15.76 ea |

STRAIGHT CONNECTOR

Female

- | | | |
|----------|------------------|-----------|
| #58618CL | 1/2" x 3/4" FNPT | \$5.39 ea |
|----------|------------------|-----------|



Male

- | | | |
|----------|------------------|-----------|
| #58622CL | 1/2" x 3/4" MNPT | \$5.18 ea |
| #58624CL | 3/4" x 3/4" MNPT | \$5.52 ea |
| #58623CL | 1/2" x 1/2" MNPT | \$4.02 ea |
| #58625CL | 1" x 1" MNPT | \$7.95 ea |

END STOP



- | | | |
|----------|------|-----------|
| #58630CL | 1/2" | \$2.64 ea |
| #58631CL | 3/4" | \$4.35 ea |
| #58632CL | 1" | \$6.82 ea |

BRASS PUSH FITTINGS

- Corrosion resistant brass body
- Compatible with PE-RT, PEX, copper, and PVC

STRAIGHT COUPLING



- | | | |
|--------|-------------|------------|
| #58600 | 1/2" x 1/2" | \$4.83 ea |
| #58601 | 3/4" x 3/4" | \$6.57 ea |
| #58602 | 1" x 1" | \$12.99 ea |

REDUCING COUPLING



- | | | |
|--------|-------------|------------|
| #58609 | 3/4" x 1/2" | \$6.12 ea |
| #58610 | 1" x 3/4" | \$10.25 ea |

90° ELBOW



- | | | |
|--------|-------------|------------|
| #58603 | 1/2" x 1/2" | \$6.41 ea |
| #58604 | 3/4" x 3/4" | \$8.89 ea |
| #58605 | 1" x 1" | \$15.96 ea |
| #58606 | 3/4" x 1/2" | \$10.15 ea |

TEE



- | | | |
|--------|--------------------|------------|
| #58611 | 1/2" x 1/2" x 1/2" | \$8.69 ea |
| #58612 | 3/4" x 3/4" x 3/4" | \$12.64 ea |
| #58613 | 1" x 1" x 1" | \$25.24 ea |

REDUCING TEE

- | | | |
|--------|--------------------|------------|
| #58617 | 3/4" x 1/2" x 1/2" | \$11.61 ea |
| #58614 | 3/4" x 3/4" x 1/2" | \$12.34 ea |
| #58616 | 3/4" x 1/2" x 3/4" | \$12.63 ea |
| #58615 | 1" x 1" x 3/4" | \$20.91 ea |

STRAIGHT CONNECTOR

Female

- | | | |
|--------|------------------|-----------|
| #58618 | 1/2" x 3/4" FNPT | \$6.12 ea |
|--------|------------------|-----------|

Male

- | | | |
|--------|------------------|------------|
| #58622 | 1/2" x 3/4" MNPT | \$6.96 ea |
| #58624 | 3/4" x 3/4" MNPT | \$6.21 ea |
| #58623 | 1/2" x 1/2" MNPT | \$4.76 ea |
| #58625 | 1" x 1" MNPT | \$13.92 ea |



END STOP



- | | | |
|--------|------|-----------|
| #58630 | 1/2" | \$3.49 ea |
| #58631 | 3/4" | \$5.29 ea |
| #58632 | 1" | \$7.11 ea |

BLUE MONSTER® POWER DEUCE® TUBE BRUSHING SET



#37899 \$33.50 ea

Includes brush sizes 1/2", 3/4", and 1" O.D. and a Quik-Change chuck adaptor.

Stop Valves

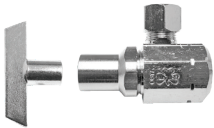


I.P.S. TO COMPRESSION ANGLE STOP VALVE



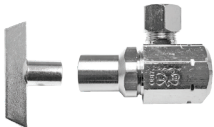
PART#	I.P.S. INLET	OUTLET O.D.	PRICE
#04708	3/8"	3/8"	\$10.58 ea

I.P.S. TO COMPRESSION LOOSE KEY STOP VALVE



PART#	I.P.S. INLET	OUTLET O.D.	PRICE
#82943	1/2"	3/8"	\$13.55 ea

I.P.S. TO COMPRESSION LOOSE KEY STOP VALVE WITH INTEGRAL CHECK VALVE



PART#	I.P.S. INLET	OUTLET O.D.	PRICE
#41658	3/8"	3/8"	\$43.92 ea

I.P.S. TO COMPRESSION INTEGRAL CHECK VALVE ANGLE STOP



PART#	I.P.S. INLET	OUTLET O.D.	PRICE
#41707	1/2"	3/8"	\$36.89 ea
#42388	3/8"	3/8"	\$36.89 ea

COMPRESSION TO COMPRESSION INTEGRAL CHECK VALVE ANGLE STOP



PART#	INLET O.D.	OUTLET O.D.	PRICE
#41653	5/8"	3/8"	\$43.92 ea

COMPRESSION TO COMPRESSION ANGLE STOP VALVE



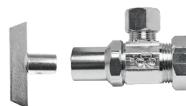
PART#	INLET O.D.	OUTLET O.D.	PRICE
#44428	5/8"	3/8"	\$12.21 ea

COMPRESSION TO COMPRESSION STRAIGHT STOP VALVE



PART#	INLET O.D.	OUTLET O.D.	PRICE
#44429	5/8"	3/8"	\$13.25 ea

COMPRESSION TO COMPRESSION LOOSE KEY STOP VALVE



PART#	INLET O.D.	OUTLET O.D.	PRICE
#85367	5/8"	3/8"	\$13.92 ea

1/4 TURN STRAIGHT STOP PRESS BALL VALVE



Unique triangle handle converts to a loose key

#19807	1/2" Press x 3/8" Comp	\$15.95 ea
#19808	1/2" Press x 1/2" Comp	\$15.95 ea

STOP KEY FITS 9/32 SQUARE



#45596	\$3.54 ea
--------	------------------

1/4 TURN ANGLE STOP PRESS BALL VALVE

Unique triangle handle converts to a loose key



#19805	1/2" Press x 3/8" Comp	\$18.08 ea
#19806	1/2" Press x 1/2" Comp	\$18.08 ea

1-1/2" SEAMLESS PRE-WRAPPED CAST P-TRAP INSULATION KIT



#41655	\$161.82 ea
--------	--------------------

Sloan Repair & Shower

SLOAN®

SLOAN ACT-O-MATIC® INSTITUTIONAL SHOWER HEADS

- Institutional Style Shower Head
- Spring-loaded, self-cleaning spray disk prevents particle clogging and reduces maintenance
- "Cone Within a Cone" spray pattern for total body coverage
- Fast drain feature to prevent residual slow dripping
- All brass construction
- Vandal resistant
- 1/2" IPS inlet



#84498
2.5 GPM
Wall Mounted

\$308.95 ea

#69004
2.0 GPM
Behind the Wall

\$354.32 ea

REPAIR KIT FOR SLOAN ACT-O-MATIC®



#84249

\$101.63 ea

Chrome Plated 2.5 GPM repair kit for use with older Sloan Act-O-Matic institutional showerheads to a flow control model.

Includes:

- Spray disc assembly
- Spray disc O-ring
- Adjustment screw o-ring
- Pipe fitting o-ring
- Flow control kit

SLOAN ACT-O-MATIC® INSTITUTIONAL SHOWER HEADS



#81809
2.0 GPM

\$133.32 ea

#44760
2.5 GPM

\$133.32 ea

DIAPHRAGM KITS FOR G2, ECOS, AND SOLIS

All kits in this block **\$54.80 ea**



Includes
4 AA Batteries

#85629 (EBV-1025-A)
For 0.125 and 0.25 GPF Urinals

#08695 (EBV-1023-A)
For 0.5 GPF Urinals

#08137 (EBV-1022-A)
For 1.0 and 1.5 GPF Urinals

#83565 (EBV-1024-A)
For 1.28 Closets

#08285 (EBV-1020/1053-A)
For 1.6 and 3.5 GPF Closets

#08710 (EBV-1021-A)
2.4 GPF Closets

ELECTRONIC MODULES

4 AA Batteries Required & Included



#08698 (EBV-129-AU)
Blue Urinal Module
for New Style G2

\$187.66 ea

#08697 (EBV-129-AC)
Blue Closet Module
for New Style G2

\$187.66 ea

G2 BATTERY COVER WITH SCREW



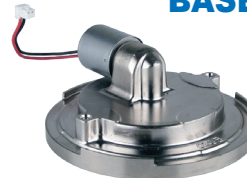
#49563

\$19.40 ea

#32737
AA Battery

69¢ ea

BASE WITH SOLENOID

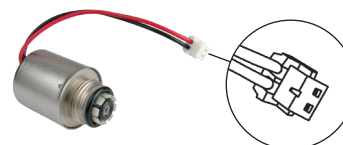


#08720 (EBV-145-A)
G2 New Style
Base with Solenoid

\$121.08 ea

CAUTION: NOT Interchangeable with Old Style

SOLENOIDS



#08721 (EBV-136-A)
Replacement Solenoid Only
for New Style G2

\$32.63 ea

Drain Cleaners

M12™ TRAPSSNAKE 6' TOILET AUGER



Electrically Powered Auger
for Tough Clogs!

#38628 **\$212.30 ea**

- Includes auger, driver, battery pack, and charger
- Patented Cable Lock holds cable in place for easy extension and retraction
- Fixed rubber boot prevents scratches
- Cable Size: 6 ft. x 1/2 in.
- Recommended Drain Size: 2 in. - 4 in.
- Warranty: 5-year tool, 3-year battery, 2-year cable

DRIP-PROOF AUGER CARRYING CASE



#36177 **\$39.70 ea**



URINAL AUGER



#35390 **\$89.60 ea**

- 48" long spring specially coiled for clearing urinals
- Spring telescopes from guide tube to clear stoppage beyond urinal
- Compact and durable design
- Hexagonal aluminum inner tube
- Galvanized steel push rod
- Rubber bumper to protect bowl

REPLACEMENT CABLE FOR URINAL AUGER

#35390CBL **\$42.50 ea**

FORCE CUP PLUNGER



#03001

\$6.85 ea

DYNA-FORCE HEAVY DUTY FORCE CUP



#03000

\$8.75 ea

MINI PLUNGER



#39495

\$7.55 ea

FUNNEL-NOSE PLUNGER



#40350

\$12.25 ea

6' TELESCOPIC CLOSET AUGER WITH DOWN HEAD

#03129 **\$123.48 ea**



- 3-6 foot
- Makes six foot closet augers obsolete!
- Gives you three extra feet of cable with the touch of a button
- Extra heavy duty kink-resistant cable

CABLE ONLY WITH DOWN HEAD
#03129CBL

\$69.90 ea

"LAST DROP" SUCTION GUN

#03007 **\$34.95 ea**



Installing a new toilet? Remove all the water from the tank with the "Last Drop" Suction Gun! You'll be able to change toilets, ballcocks, flush valves, and tank bolts without water spillage! You can also unclog floor drains by removing the rosette from the tube and sucking out the sand and water. The "Last Drop" Suction Gun is corrosion resistant and has replaceable parts so it will give you many years of service!

HVAC Maintenance

HVAC TEST KIT

For the HVAC Professional!

#40441 \$142.44 ea



INCLUDES:

- HVAC Digital Clamp Meter with 1.6" Jaw
- Dual IR/Probe Thermometer
- Dual Range Non-Contact Voltage Tester with Flashlight

The Clamp Meter measures AC current and NCVT via clamp, AC/DC voltage, resistance, frequency, DC microamp, capacitance, duty cycle, diode test, and continuity via test-leads, and temperature with thermocouple. The bright flashlight may be used independently of the voltage detection function. Measure air vents and duct temperature using probe with hands-free hanging hook. Non-Contact Voltage Tester detects voltage with simultaneous visual and audible voltage indicators.

7 PC. MULTI-FIN TOOL KIT

#34815 \$16.50 ea



- Straightens and cleans condenser and evaporator fins with ease
- Designed to fit units with fin spacing of 4–24 fins per inch
- Heads are angled so the hand is a safe distance from the sharp fins
- Heads may also be reversed

CONDENSATE BLOWOUT GUNS

Clears Condensate Drains with a SWOOSH!



#39132

Uses 20G CO₂ cartridges with 25% more capacity

\$49.50 ea



#37723

Uses standard CO₂ cartridges

\$49.50 ea

CO2 CARTRIDGES FOR BLOWOUT GUNS



#39172

Case of 12 20 gram cartridges. Use with gun #39132

\$44.94 cs



#SP9666

Case of 12 standard cartridges. Use with gun #37723

\$44.94 cs

MEGAPRO®

HVAC DRIVER



#37710

\$45.22 ea

Perfect for HVAC installers, this driver is loaded with 6 double end bits including the Schrader Valve Stem bit, and the DoubleLok Phillips #2 Combo bit which can be used in any 1/4" quick change chuck. It also features a Square Awl Reamer for punching through sheet metal. All bits are conveniently stored right in the handle! The shaft opening serves as a 1/4" hex driver.

⊖ ⊕ F 4-6	⊕ ⊕ PH 2-2
⊖ ⊕ F 3-5	⊕ ⊕ AWL-SQ
⊕ ⊕ PH 0-3	⊖ ⊕ F5.5-VST
⊕ ⊕ PH 1-2	

CUT RESISTANT GLOVES

Protection with High Dexterity!



#39772L Large

#39772XL XL

#39772XXL XXL

Your Choice! \$11.85 pr

HVAC Maintenance

PAN TREATMENT FOR CONDENSATE DRAIN PANS



#79802
(PROTREAT 217) **\$34.85 ea**

- Controls odors and eliminates drain pan overflows
- Dosage is 3 tablets per 3 tons each month
- Jar of 200 tablets

FLOW PLUS MEDIUM TONAGE PAN TREATMENT



#79804
(FLOW-PLUS-10) **\$47.89 ea**

- Maintains condensate flow for 5-20 ton units
- Long term release, non-corrosive
- Dissolves completely, environmentally safe
- Dosage is 1 tub per 5-20 tons each month
- 10 oz. container

MINI TABS CONDENSATE PAN TREATMENT



#79805
(FLOW-PLUS-25) **\$56.62 ea**

- Maintains condensate flow for 1/2-3 ton units
- Unique polymer formula
- Long term release, non-corrosive
- Dissolves completely, environmentally safe
- Dosage is 1 tablet per 1/2-3 tons each month
- Jar of 25 tablets

FLOW PLUS™ CONDENSATE PAN TREATMENT



#79796
Pack of Six 1 oz. Tablets
\$48.53 ea

- Condensate activated
- Disperses dust, environmental debris, & other contaminants
- Completely water-soluble and 100% active
- Deodorizes as it treats - wintergreen fragrance
- Tablet adheres to the drain pan and will not float away and block the drain line
- Non-corrosive, biodegradable, and environmentally safe

COIL CLEANER - 20 oz.



#79470 **\$10.99 ea**

- Cleans and deodorizes cooling coils in air conditioners
- Keeps units running clean
- No-rinse formula
- Non-acid & non-caustic
- Safe for the environment

CONNECTED WET SWITCH® FLOOD DETECTOR

Shuts Down the HVAC System When Moisture is Detected



#41968
\$95.42 ea

Features

- Wi-Fi-enabled latching switch notifies users via LED, text, or email when it has been tripped
- Prevents further water damage to floors and ceilings, even in remote locations, by turning off the HVAC system upon detecting moisture
- Can shut down the system when detecting as little as one or two drops of water
- Flexible Power Options: Connects to a 24VAC power supply, standard on most air handler units, or a 12VDC power supply, standard on most alarm and home automation systems.
- Easy Testing and Resetting: Includes push-to-test and push-to-reset buttons for effortless functionality checks

SPEEDCLEAN® COILJET® BACKPACK PORTABLE HVAC COIL CLEANER

Makes it Easy To Clean HVAC Coils in Hard-To-Reach Areas



#41969 **\$891.62 ea**

Features

- Small, portable design lets you clean HVAC coils in hard-to-reach areas where access to power and water is limited
- Easy-to-reach selector knob lets you select the desired on-board chemicals or rinse, eliminating the need for dragging hoses or bulky pump sprayers to clean coils
- 125 PSI at 0.6 gallon per minute flow rate won't overflow the indoor AC evaporator coil condensate line
- 12V 10Ah Rechargeable LiPoFe4 battery makes it easy to clean virtually any coil, indoors or outdoors all day.
- LED battery status meter shows the level of charge
- Includes: CoilJet® Backpack, 15° spray nozzle, rechargeable LiPoFe4 battery, and AC charger.
- Compatible with all CoilJet® Accessories

Chemicals & Cleaning

NITRILE DISPOSABLE GLOVES LATEX FREE & POWDER FREE - 4 MIL



#37918L
Large - 100 Ct

\$19.95 bx

#37918XL
XL - 100 Ct

\$19.95 bx

ASTRO GRIP TEXTURED NITRILE GLOVES BOX OF 100



Powder-free. 7 mil thick. Non-latex. Exceptional chemical and puncture resistance. Dual-sided scale textured surface for superior grip.

#38212L
Large - 100 Ct

\$42.26 bx

#38212XL
XL - 100 Ct

\$42.26 bx

LIME SOLVENT 32 oz.



#79114CS
(Case of 12)

\$172.43 cs

*Great for Urinal Pipes! Heavy Duty.
Can Ship UPS!*

Used to remove lime, scale, urinary salts, plaster, rust and other mineral deposits. Can be used on hot water coils, boilers, gas water heaters, cooling towers, condensers and heat exchangers. Safe to use on steel, copper, iron, brass, bronze and lead piping.

JAVELIN™ URINAL TREATMENT 32 oz.



#90094 **\$25.25 ea**

- Restores and maintains urinal drain flow
- Quickly breaks down hard, uric salt deposits
- Clings to the pipes and urinal bowls, leaving behind a protective, non-stick coating which prevents future deposits from forming
- Eliminates the need for urinal removal and mechanical drain opening, saving labor cost and time
- Eliminates foul odors

NON-ACID DRAIN OPENERS

Destroys hair and grease! Won't harm pipes!



**Hot Water Activated
Drain Opener - 1 lb.**

#60802200CS (Case of 24)
For Slow Draining Clogs

\$282.58 cs



**Cold Water Activated
Drain Opener - 1 lb.**

#60802000CS (Case of 24)
For Standing Water Clogs

\$292.55 cs

PB GONE 32 oz. URIC ACID ERADICATOR



#60800016 **\$9.85 ea**

PBGone eliminates odors caused by Uric Acid! Engineered bacteria create an army of enzymes to attack and eliminate uric acid molecules in minutes, leaving behind a clean, fresh smell. Use around toilets, urinals, grease traps, septic systems, concrete, waste water, etc.

GOOF OFF GRAFFITI REMOVER 16 oz. CAN



#79643 **\$15.61 ea**

Removes most types of graffiti, including spray paint and latex paint from stone, concrete, brick, metal, glass, fiberglass, wood, fully cured varnished and oil-based painted surfaces. Simply spray on a cloth, and rub the affected area.

Don't Forget To Order Some Blue Rags!

BLUE COTTON EQUI-RAGS



#36149 **\$27.50 ea**
4 lb. Bag

*Super Absorbent!
A Must For Every Shop!*

Toilet Partitions

WE DO TOILET PARTITIONS!

Give us a call, and our product specialists will walk you through the entire process.



Types of Toilet Partitions



Floor Supported

MOST COMMON



Floor Supported & Overhead Braced



Ceiling Hung



Floor to Ceiling

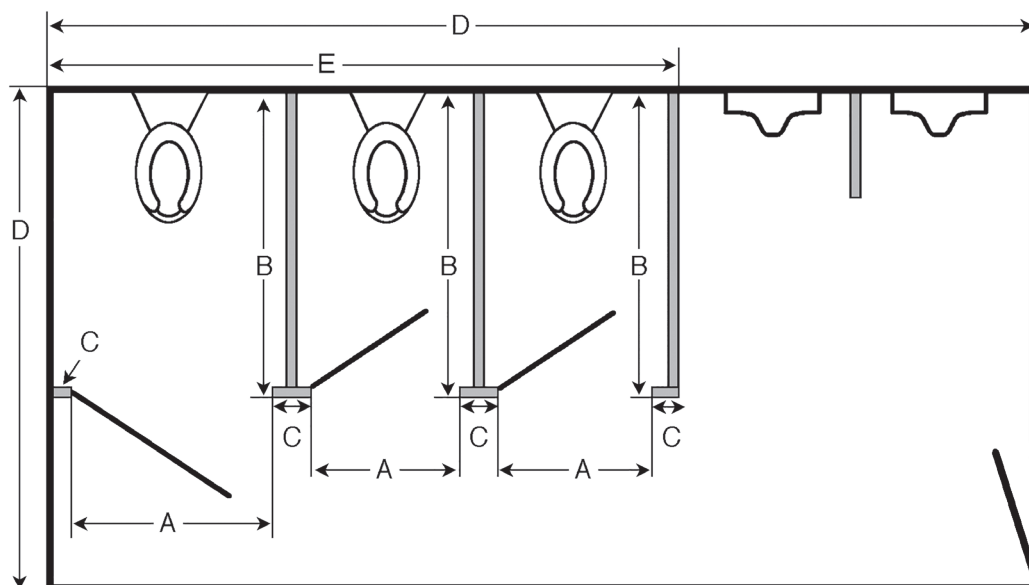


Ultimate Privacy

PLEASE SUBMIT THE FOLLOWING INFORMATION ON A DRAWING OF THE LAYOUT OF THE ROOM:

1. Material of new partitions: Stainless steel, steel, solid plastic (HDPE), powder coated, plastic laminate, black core phenolic, or color thru phenolic.
2. Color of new partitions
3. Specify headrail braced, ceiling hung, or floor supported
4. Finished wall dimensions of room
5. C x C dimensions between fixtures (if possible)
6. A.D.A. Requirements
7. Door swings
8. Location of obstructions (radiators, windows, floor drains, etc.)
9. If ceiling hung, must specify floor to ceiling height (F)

Below Is An Example Of What The Finished Picture Should Look Like:



- A = Door Opening Dimensions
- B = Wall To Front Of Pilaster Dimensions
- C = All Pilaster Widths. Specify If Wall Hung.
- D = Room Dimensions
- E = Wall To End Of Partitions (Total Partition Width)
- F = Floor To Ceiling Height (Not Illustrated)



Scan this code for a detailed article about our partitions.

LED RETRO 2' x 4' BACKLIT FLAT PANEL



#33823 **\$87.99 ea**

- Wattage: 30W/40W/50W
- Color Temperature: Warm to cool white
- CCT (Kelvin): 3500K/4000K/5000K
- Built-in Surge Protection - 2KV

Applications: Schools & colleges, hospitals, malls, office buildings, sports buildings, hallways, and many others

COOL WHITE LED LAMP - 11.5W

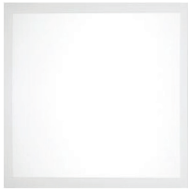


#33883 **\$3.89 ea**

- Wattage: 11.5W
- Incandescent Equivalent: 75W
- Volts: 120V
- Kelvin: 4000K
- Temperature: Cool white
- Non-dimmable

Applications: Replacement fluorescent bulb

LED RETRO 2' x 2' BACKLIT FLAT PANEL



#33853 **\$56.99 ea**

- Wattage: 20W/30W/40W
- Color Temperature: Warm to Cool White
- CCT (Kelvin): 3500K/4000K/5000K
- Built-in Surge Protection - 2KV

Applications: Schools & colleges, hospitals, malls, office buildings, sports buildings, hallways, and many others

WARM WHITE LED LAMP - 9.8W



#612605 **\$6.35 ea**

- Wattage: 9.8W
- Incandescent Equivalent: 60W
- Volts: 120V
- Kelvin: 2700K
- Color Temperature: Warm white
- Dimmable

Applications: Replacement fluorescent bulb

T8 LED COOL WHITE LAMP



#33894 **\$7.45 ea**

Case Quantities of 25 Only

- Wattage: 14W, Lumens: 1800
- Color Temperature: 4000K cool white
- Medium bi-pin base
- Nominal length: 48"

LED AREA LIGHT TYPE IV



#36265 **\$185.99 ea**

- Bronze Finish
- Wattage: 200W, Lumens: 26,536
- Color Temperature: 5000K natural light
- Built-in Surge Protection - 4KV

14" SQUARE ACRYLIC LED



#36237 **\$19.99 ea**

- Flush mounted
- Wattage: 20.5W
- Incandescent Equivalent: 100W
- Volts: 120V
- Kelvin: 3000K
- Color Temperature: Warm white
- Non-dimmable

LED FLOODLIGHT



#612606 **\$6.50 ea**

- Wattage: 6.5W
- Incandescent Equivalent: 50W
- Volts: 120V
- Lumens: 520
- CCT (Kelvin): 3000K
- Medium base
- 40° beam angle
- Dimmable

OPEN HOSE REEL UNITS



#88973 (B-7232-01)
35' Hose - 3.9 GPM

\$1250.74 ea



#67239 (B-7212-01)
15' Hose - 3.7 GPM

\$963.43 ea

- Open reel with epoxy coated steel finish
- Polished chrome plated spray valve
- Brass construction
- Max pressure: 125 psi
- Min pressure: 20 psi
- Max temperature: 140°F
- Min temperature: 40°F
- 3/8" NPT female inlet
- Adjustable hose bumper
- Multi-fit bracket for wall, ceiling or under counter mounting
- Ratcheting system holds the length of hose until a slight tug retracts it automatically

BLUE HOSE KITS FOR REEL UNIT



#38262 (014941-45)
35' Long

\$586.48 ea

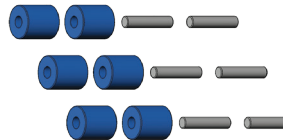


#82053 (014944-45)
15' Long

\$226.06 ea

- 3/8" NPT inlet & outlet
- Heavy-duty, non-marking
- Bend restrictor & spring protector
- Water Gun Flow: 5.74 GPM
- Pressure Max: 300 psi
- Pressure Min: 20 psi
- Temperature Max: 200°F
- Temperature Min: 40°F

ROLLER KIT FOR OPEN HOSE REELS



#22289 (014938-45)

\$82.50 ea

SWIVEL REPAIR KIT FOR HOSE REEL



#SP9921 (014946-45)

\$156.50 ea

- 3/8" NPT
- Fits 12' through 35' hose reels
- Material: brass and stainless steel

BLUE GRIP HANDLE FOR HOSE REEL



#53600 (012504-40)

\$39.09 ea

3/8" NPT female Inlet, 3/4-14 female outlet and washer

O-RING KIT FOR HOSE REEL



#69323 (014948-45)

\$44.56 ea

Fits 12' through 35' hose reels

HEX SWIVEL ASSEMBLY FOR 3/8" HOSE REEL



#67661 (019652-40)

\$19.90 ea

3/8" NPT female and male threads

BLUE HIGH-FLOW SPRAY VALVE



#86377 (EB-0107)

\$125.19 ea

High flow 5.6 GPM spray valve, polished chrome plated brass body with blue rubber bumper and 3/4-14 UN male inlet.

NOTE: Not to be used on Pre-Rinse Units

EQUIPARTS
Repair Parts Specialists

Scan This Code to See What's
New in Our Video Library!



Spring Maintenance Tip:

A quick HVAC coil cleaning
can improve airflow, lower
energy costs, and extend
equipment life.



Door Locks

PRIVACY LOCK WITH OCCUPANCY INDICATOR

Yale



#606098

Satin Chrome Finish

\$209.71 ea

- AU levers
- 2-3/4" backset
- ANSI strike.

ROUND DEADBOLT WITH OCCUPANCY INDICATOR



#14419

Satin Chrome Finish

\$36.06 ea

FALCON

PRIVACY LOCK

SCHLAGE



#SP3510

Satin Chrome Finish

\$178.78 ea

- Saturn levers
- 2-3/4" backset
- 1-1/8" x 2-1/4"
- Square corner

PROGRAMMABLE PRIVACY LOCK WITH STAND ALONE KEYPAD



#13580

Electronic Lock
Satin Chrome Finish

\$484.72 ea

SCHLAGE